



# Helpful Hints clear & easy

# 075

426 Industrial Boulevard • Kearneysville WV 25430-2776 • USA  
 Telephone: +1 304 728 7056 • technicalinquiry@royalvendors.com  
 Toll-free in North America: 1 800 931 9214 • Fax: +1 304 725 4016  
 Canada: +1 905 738 5777 • Mexico: +52 55 5203 6887  
 Europe: +49 2158 95 1000 • Australia: +61 2 9890 5433

Page: 1 of 2

Date: 23 Mar 2015

Revision: 00

**SUBJECT:** Coin Changer Fit and Coin Chute Adjustment in GIII CDC

**MODELS:** GIII CDC

**TOOLS REQUIRED:** N/A

**ESTIMATED TIME:** N/A

Number of  
People  
Required



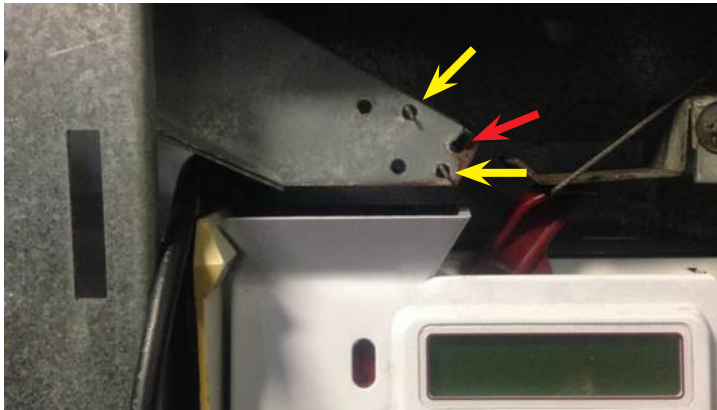
The following areas of this vender contain voltage which can cause serious injury or even death: the main power cord, supplying 115-230 VAC to the evaporator, EMI filter, refrigeration system, monitor, and computer; the power line from the EMI filter to the ballast and transformer; and the ballast, which can produce upwards of 600 volts. Remove all power from the vender before working in any of these areas.

**INFORMATION:** This document describes the procedure for properly fitting the changer in GIII CDC venders, as well as proper coin chute adjustment.

### Wide Port Venders (serial numbers 200015AA00421 and after):

1. Ensure the coin chute is clean, with no dirty or sticky debris present.
2. Ensure the coin deflector ("race car") is correctly installed (pointed out in yellow in Figure 1). Also ensure the wire tie (red arrow) is present to secure the coin deflector.
3. Adjust the coin chute in and out using the adjustment screw pointed out in yellow in Figure 2. The coin chute should be centered above the changer hopper.

**Figure 1.** The coin deflector should be properly installed with its tabs (pointed out with yellow arrows) inserted in the holes at the end of the coin chute assembly.



**Figure 2.** In and out adjustment screw.

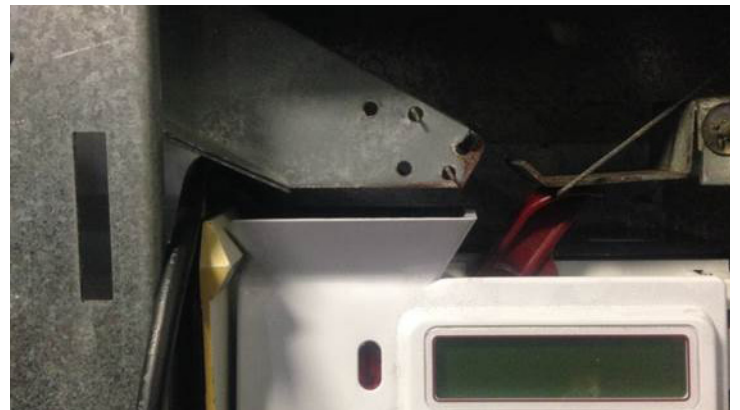


4. Adjust the coin chute up and down using the vertical adjustment bracket, pointed out in yellow in Figure 3. The gap between the end of the coin chute and the changer hopper should be no more than 3/16" (5 mm), as shown in Figure 4.

**Figure 3.** Vertical adjustment bracket.



**Figure 4.** The gap should be no more than the one shown here.



**ANY QUESTIONS? CONTACT ROYAL VENDORS' CUSTOMER SERVICE DEPARTMENT  
 IN NORTH AMERICA, CALL TOLL FREE 1 800 931 9214**



**SUBJECT:** Coin Changer Fit and Coin Chute Adjustment in GIII CDC

**MODELS:** GIII CDC

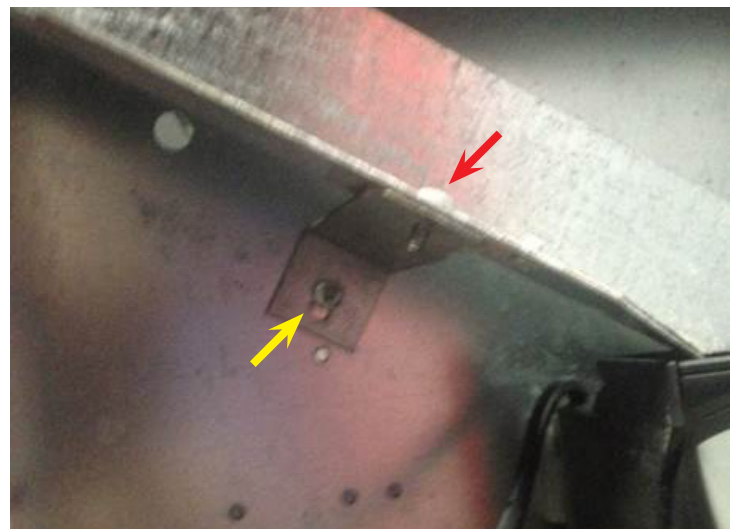
**Narrow Port Venders (serial numbers 200015AA00420 and before):**

1. Ensure the coin chute is clean, with no dirty or sticky debris present.
2. Ensure the coin deflector ("race car") is correctly installed (pointed out in yellow in Figure 1, on page 1). Also ensure the wire tie (red arrow in Figure 1) is present to secure the coin deflector.
3. All adjustments to the coin chute are made using the adjustment bracket, pointed out in yellow in Figure 5. Adjust the coin chute in and out using the adjustment screw pointed out in red in Figure 6. The coin chute should be centered above the changer hopper.
4. Adjust the coin chute up and down using the vertical adjustment screw, pointed out in yellow in Figure 6. The gap between the end of the coin chute and the changer hopper should be no more than  $\frac{3}{16}$ " (5 mm), as shown in Figure 4 (on page 1).

**Figure 5.** Location of the adjustment bracket.



**Figure 6.** The in and out adjustment is made using the screw pointed out in red. Vertical adjustments are made using the screw pointed out in yellow. Ensure the gap between the coin chute and the changer hopper is no more than  $\frac{3}{16}$ " (5 mm).



**ANY QUESTIONS? CONTACT ROYAL VENDORS' CUSTOMER SERVICE DEPARTMENT  
IN NORTH AMERICA, CALL TOLL FREE 1 800 931 9214**