



SERVICE BULLETIN # 00008

201 INDUSTRIAL BOULEVARD • KEARNEYSVILLE, WV 25430

Phone: (304) 728-7056 • Fax: (304) 725-6579 • Toll Free: (800) 931-9214

PAGE: 1 of 1

DATE: 8-16-00

REVISION: 06

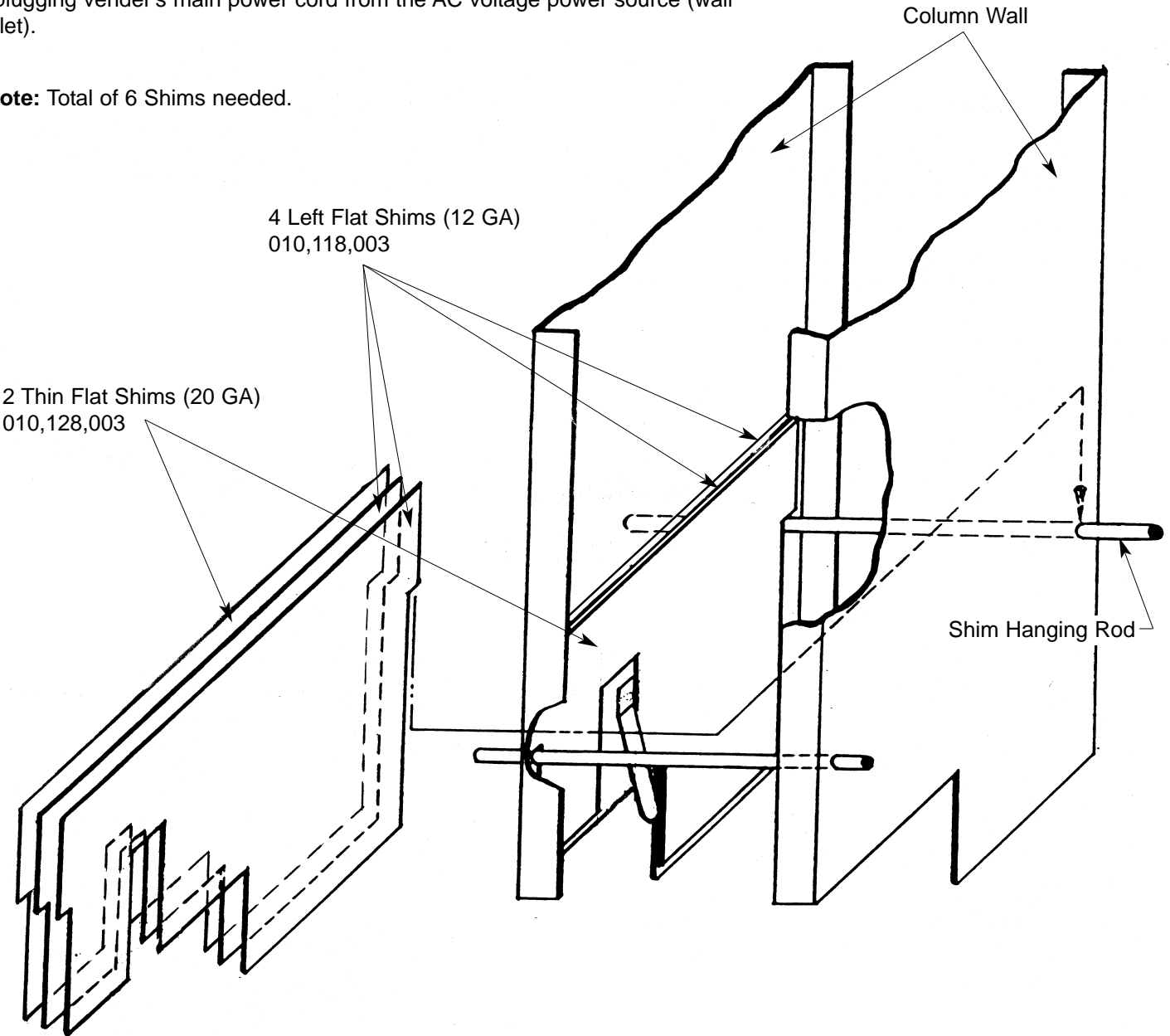
SUBJECT: Can Shim / Rod Installation for 10 oz. Cans (Wide Column)

MODELS: Electro-Mechanical, Merlin 2000, Merlin III

KIT NUMBER	KIT DESCRIPTION (1 kit per wide column)
010,161,024	Can Shim / Rod Installation Kit

BEFORE WORKING ON VENDER: Remove power from vender by unplugging vender's main power cord from the AC voltage power source (wall outlet).

***Note:** Total of 6 Shims needed.



ANY QUESTIONS??? CONTACT ROYAL VENDORS' CUSTOMER SERVICE DEPARTMENT
CALL TOLL FREE (800) 931-9214