



SERVICE BULLETIN # 00065

201 INDUSTRIAL BOULEVARD • KEARNEYSVILLE, WV 25430
 Phone: (304) 728-7056 • Fax: (304) 725-6579 • Toll Free: (800) 931-9214

PAGE: 1 of 1
DATE: 8-17-00
REVISION: 04

SUBJECT: Installation of Validator Guard

MODELS: Landscape Venders

KIT NUMBER	KIT DESCRIPTION (This kit is intended for Validators less than 4.5 inches deep)
011190	Validator Guard Kit (RVCD, RVMC and RVDP- E Models)
141592	Validator Guard Kit (RVCC - E Models)

BEFORE WORKING ON VENDER: Remove power from vender by unplugging vender's main power cord from the AC voltage power source (wall outlet).

REASON FOR FIX: To protect the validator and bills when the door is pried open.

INSTRUCTIONS:

Note: The validator guard can not be used with validators deeper than 4.5 inches from the front of the mounting plate to the rear of the bill box. If the validator is 4.5 inches deep, see Helpful Hint 16.

1. Mount the two hinges to the Validator Guard Door with four of the enclosed pop rivets.
2. There may already be four holes pre-drilled on the left flange of the door frame as shown below in the front view. If the holes are not pre-drilled you will have to drill them to the specifications shown below in the front view.
3. Mount the Validator Guard Door (assembled in step 1) with the four remaining pop rivets.

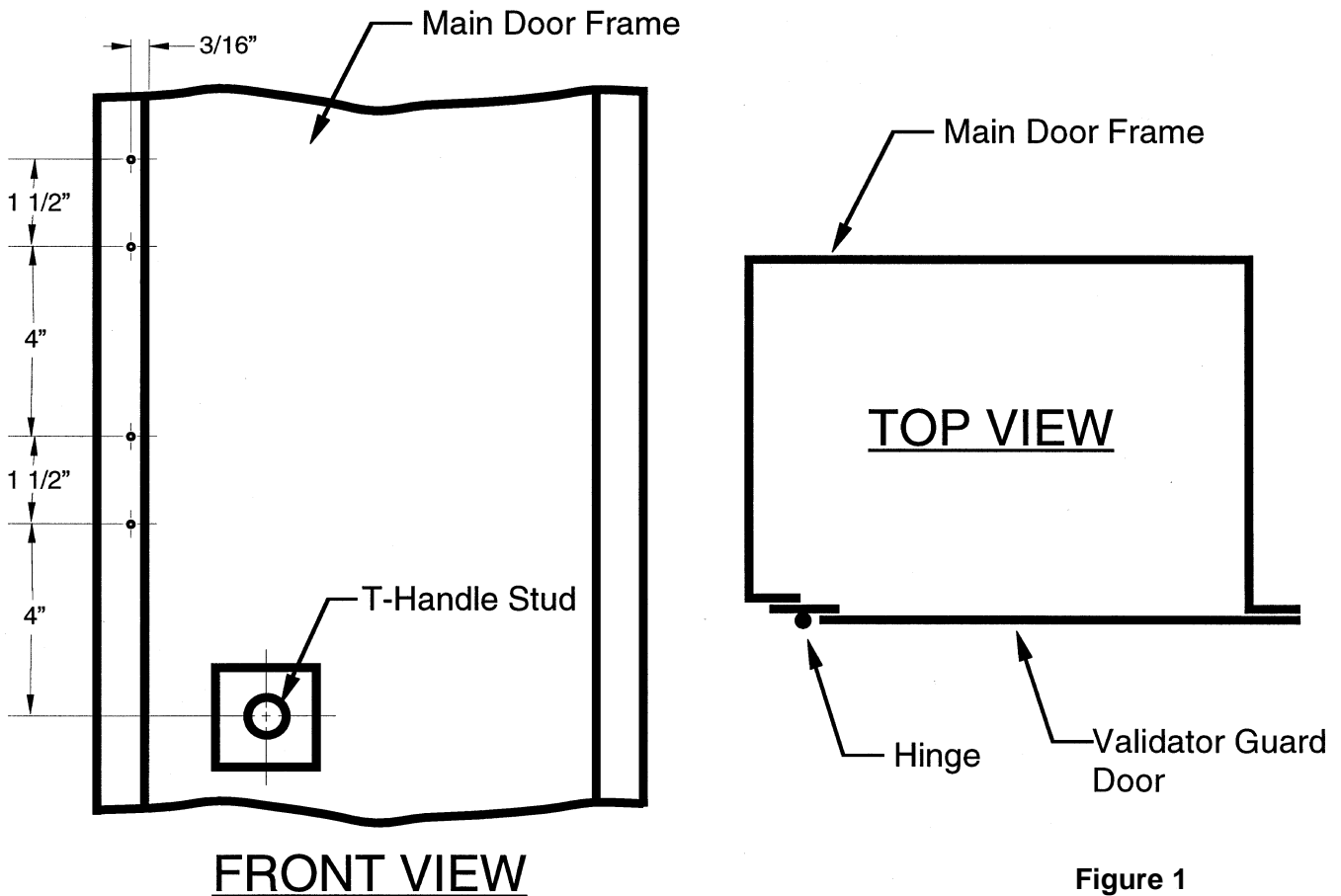


Figure 1

ANY QUESTIONS??? CONTACT ROYAL VENDORS' CUSTOMER SERVICE DEPARTMENT
 CALL TOLL FREE (800) 931-9214