



SERVICE BULLETIN # 00060

201 INDUSTRIAL BOULEVARD • KEARNEYSVILLE, WV 25430

Phone: (304) 728-7056 • Fax: (304) 725-6579 • Toll Free: (800) 931-9214

PAGE: 1 of 1

DATE: 8-17-00

REVISION: 02

SUBJECT: Installation of a N.R.I. Simplex 5 Changer Kit

MODELS: Merlin 2000

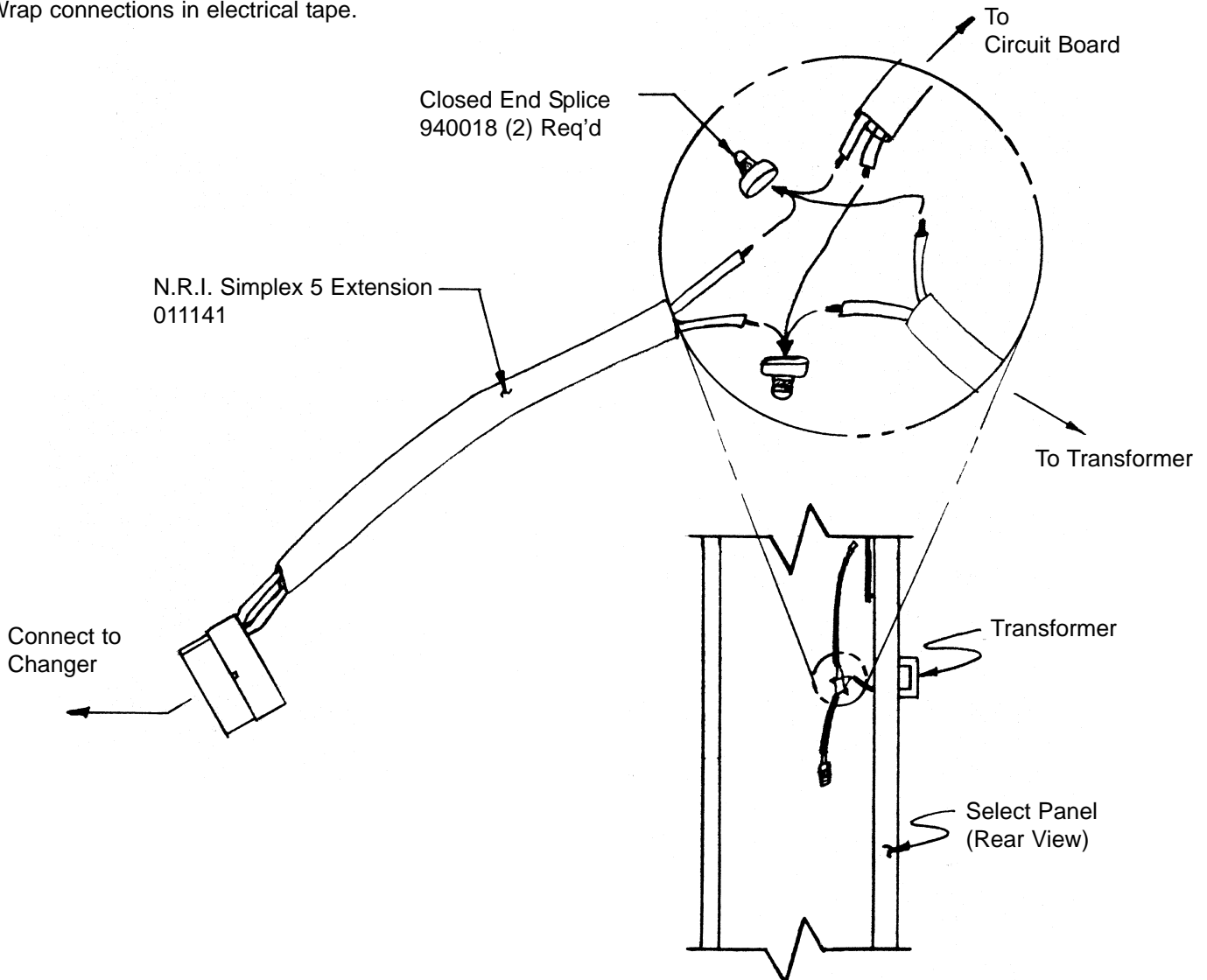
KIT NUMBER	KIT DESCRIPTION (1 kit per vender)
011142	N.R.I. Simplex 5 Changer Kit

BEFORE WORKING ON VENDER: Remove power from vender by unplugging vender's main power cord from the AC voltage power source (wall outlet).

Note: Converting from a standard changer harnessing to a Mars Executive Changer Harnessing or a N.R.I. Simplex 5 Harnessing.

INSTRUCTIONS:

1. Find 24 volt harness from transformer to circuit board.
2. Cut into line, strip wire approximately 3/8"
3. Take one wire from N.R.I. Simplex 5 Extension. Using the enclosed end splices, connect wire to stripped ends, repeat for other wire. (see below)
4. Wrap connections in electrical tape.



ANY QUESTIONS??? CONTACT ROYAL VENDORS' CUSTOMER SERVICE DEPARTMENT
CALL TOLL FREE (800) 931-9214