



SERVICE BULLETIN 334

426 Industrial Boulevard • Kearneysville WV 25430-2776 • USA
Telephone: +1 304 728 7056 • technicalinquiry@royalvendors.com
Toll-free in North America: 1 800 931 9214 • Fax: +1 304 725 4016
Canada: +1 905 738 5777 • Mexico: +52 55 5203 6887
Europe: +49 2158 95 1000 • Australia: +61 2 9890 5433

Page: 1 of 11

Date: 14 Dec 10

Revision: 00

SUBJECT: 3D Vis Conversion Kit Installation

Number of
People
Required



MODELS: Gill Landscape and Chameleon (Wide Port CDC only)

KIT NUMBER **KIT DESCRIPTION**

N/A *Contact DALB for kit numbers*




The following areas of this vender contain voltage which can cause serious injury or even death: the main power cord, supplying 115-230 VAC to the evaporator, EMI filter, and refrigeration system; the power line from the EMI filter to the ballast and transformer; and the ballast, which can produce upwards of 600 volts. Remove all power from the vender before working in any of these areas.

ESTIMATED INSTALLATION TIME: <45 minutes


TOOLS REQUIRED: Drill with 1/4" (6 mm) metal-cutting bit, Phillips screwdriver, flat screwdriver, channel-lock pliers, hammer, 1/8" (3 mm) punch, 1" (25 mm) putty knife, wire cutters, socket wrench with deep-set and standard 7/16" (11 mm) and 11/32" (9 mm) sockets, 10" (25 cm) or longer socket extension, masking tape, safety glasses

REQUIRED ITEM NOT INCLUDED IN KIT: Silicone (100% silicone rubber, Dow 700 or equivalent, black, flexible)

BULLETIN DESCRIPTION: This bulletin explains the procedure for converting the Gill Landscape- and Chameleon-front venders to the 3D Vis-style door.



DANGER
ELECTROCUTION HAZARD
Unplug the vender's power cord from the wall outlet before installing this conversion kit.



IMPORTANT
This modification should be accomplished only by a qualified commercial, industrial, trained service technician.

NOTE: If the vender to be converted currently has a narrow port assembly, it must be converted to wide port assembly before conversion to 3D Vis. See Service Bulletin 338 for instructions on converting to wide port assembly.

INSTALLATION INSTRUCTIONS:

SECTION 1: DOOR PREPARATION.

Step A. Fluorescent Bulb Removal.

1. Remove power by unplugging the vender's power cord from the AC voltage source (wall outlet).
2. Open the vender's main door and inner door. Remove the fluorescent light bulbs by pushing up, removing the bulb from the lower socket, and angling the bulb up and out of the door. (Refer to Figure 1.) Retain fluorescent bulbs for later use.
3. Place masking tape over the bottom lamp sockets. (Refer to Figure 2.)



Figure 1. Angle the bulb to remove it from the door.

In an effort to provide our customers with the latest information on our equipment, Royal Vendors sends service bulletins to customers using the original ship-to address or e-mail addresses, if supplied by our customers. We also post all service bulletins on our website at www.royalvendors.com. If for any reason a vender is moved to another location or is sold to another customer other than to whom Royal Vendors originally sent the machine, it is the responsibility of the original purchaser of the vender to notify the appropriate personnel of the service bulletin.

**ANY QUESTIONS? CONTACT ROYAL VENDORS' CUSTOMER SERVICE DEPARTMENT
IN NORTH AMERICA, CALL TOLL FREE 1 800 931 9214**



SERVICE BULLETIN 334

426 Industrial Boulevard • Kearneysville WV 25430-2776 • USA
Telephone: +1 304 728 7056 • technicalinquiry@royalvendors.com
Toll-free in North America: 1 800 931 9214 • Fax: +1 304 725 4016
Canada: +1 905 738 5777 • Mexico: +52 55 5203 6887
Europe: +49 2158 95 1000 • Australia: +61 2 9890 5433

Page: 2 of 11

Date: 14 Dec 10

Revision: 00

SUBJECT: 3D Vis Conversion Kit Installation

MODELS: Gill Landscape and Chameleon (Wide Port CDC only)

Step B. Sign Face Removal.

Note: *Safety glasses should be worn during this step.*

1. Working from the front of the vender with a hammer and a 1" putty knife, remove the three Christmas tree clips. This is accomplished by placing the putty knife between the trim and the sign face. (See Figure 3.) Tap the bottom of the handle of the putty knife to break the head of the Christmas tree clip off. After all three heads are removed, insert a 1/8" punch into the hole that is left when the head is removed. Tap with hammer to remove the stem of the Christmas tree clip.



Figure 2. Place masking tape over the lamp sockets to keep metal shavings out of them.



Figure 3. Removal of the Christmas trees. Slide the putty knife **between** the sign face and the trim, so as not to scratch the surface of the trim. Then, tap the handle of the putty knife to break off the head of the Christmas tree.

2. From inside the door, use an 11/32" deepset socket to loosen the nuts on the trim T-bolts. See Figure 4 for the location of the nuts. The nuts are located on the hinge side of the door. Do not loosen the bottom nut, as this will allow the trim to slide out of place. All other nuts should be loosened 3/4 of the way up the thread of the bolt. **Do not remove the nuts.**

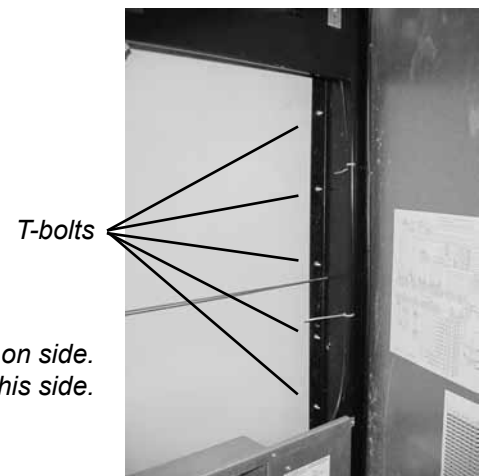


Figure 4. Location of T-bolts to be loosened on side. There are 12-15 T-bolts on this side.

**ANY QUESTIONS? CONTACT ROYAL VENDORS' CUSTOMER SERVICE DEPARTMENT
IN NORTH AMERICA, CALL TOLL FREE 1 800 931 9214**



SERVICE BULLETIN 334

426 Industrial Boulevard • Kearneysville WV 25430-2776 • USA
Telephone: +1 304 728 7056 • technicalinquiry@royalvendors.com
Toll-free in North America: 1 800 931 9214 • Fax: +1 304 725 4016
Canada: +1 905 738 5777 • Mexico: +52 55 5203 6887
Europe: +49 2158 95 1000 • Australia: +61 2 9890 5433

Page: 3 of 11

Date: 14 Dec 10

Revision: 00

SUBJECT: 3D Vis Conversion Kit Installation

MODELS: GIII Landscape and Chameleon (Wide Port CDC only)

- From inside the door, use an 11/32" deepset socket to loosen the nuts on the T-bolts across the top trim. Starting at the hinge side and working toward the center of the sign, loosen four nuts half-way up the thread of the bolts. **Do not remove the nuts.** *NOTE: These nuts are accessible through the access holes along the top of the door or they can be reached directly without using the access holes. Figure 5 shows the top access holes.*
- From inside the door, remove the four screws that secure the coinbox, and remove the coinbox. Retain coinbox and four screws for later use.
- From the inside of the door, use an 11/32" deepset socket and a 10" extension to loosen the nuts on the T-bolts across the bottom trim. Start at the hinge side and working toward the center of the sign, loosen four nuts half-way up the thread of the bolts. These nuts are accessible through the access holes along the bottom of the door. (Refer to Figure 6.) **Do not remove the nuts.**

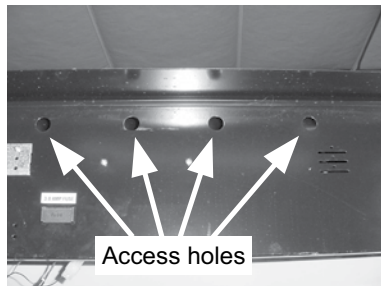


Figure 5, left. Top of door showing access holes for T-bolts.

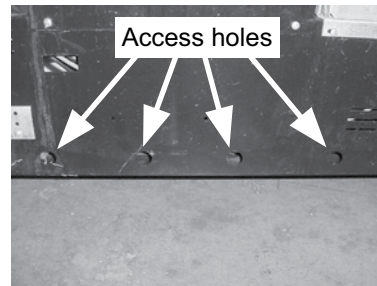


Figure 6, right. Bottom of door showing access holes for T-bolts.

- Remove the product delivery port trim. The port trim is secured by six carriage bolts, located inside the door (two in the top of the port and two on each side of the port). Use a 7/16" socket to remove the nuts on these bolts. From outside the vender, slide the port trim and package stop straight out to remove from front of vender. Retain the package stop and the six carriage bolts / nuts for later use. (Refer to Figures 7 and 8.)
- From the outside of the door, carefully push the hinge-side trim slightly out at the top. Insert a 1" putty knife between the trim and the sign to pry the sign from the trim. Slide downward with putty knife to remove the sign from the trim completely. Now slide the sign out toward the left to remove it from the vender.

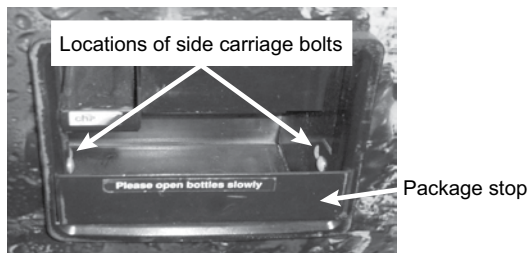


Figure 7. Locations of side carriage bolts and package stop in port.

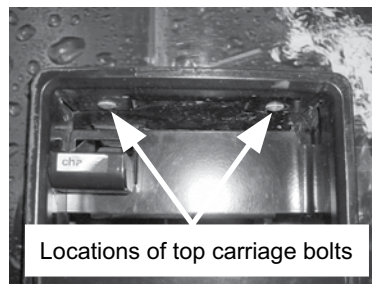


Figure 8. Locations of top carriage bolts in port.

**ANY QUESTIONS? CONTACT ROYAL VENDORS' CUSTOMER SERVICE DEPARTMENT
IN NORTH AMERICA, CALL TOLL FREE 1 800 931 9214**



SERVICE BULLETIN 334

426 Industrial Boulevard • Kearneysville WV 25430-2776 • USA
Telephone: +1 304 728 7056 • technicalinquiry@royalvendors.com
Toll-free in North America: 1 800 931 9214 • Fax: +1 304 725 4016
Canada: +1 905 738 5777 • Mexico: +52 55 5203 6887
Europe: +49 2158 95 1000 • Australia: +61 2 9890 5433

Page: 4 of 11

Date: 14 Dec 10

Revision: 00

SUBJECT: 3D Vis Conversion Kit Installation

MODELS: GIII Landscape and Chameleon (Wide Port CDC only)

Step C. Trim Removal.

1. From the outside of the door, use an 11/32" socket to remove all sign trim by removing the nuts on the T-bolts and pulling the trim straight out. These T-bolts are easily accessible from the front of the vender once the sign has been removed.
2. Working from inside the door, locate the control board in the upper left corner of the door assembly. Using a Phillips screwdriver, remove the two screws that secure the board cover. Once cover is removed, disconnect the select switch harness from the vender's control board. (Refer to Figure 9.) **CAUTION:** See note in box below regarding ESD.
3. Cut any wire ties that secure the select switch harness in the vender. Make sure that no other harnesses are cut when cutting off the wire ties. (Refer to Figure 10.) Discard the select switch harness that was removed from the vender.

Figure 9. Disconnect the select switch harness from the vender's control board.

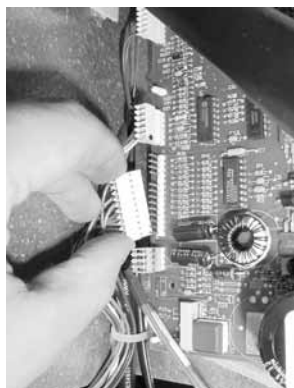



Figure 10. Cut any wire ties that secure the select switch harness in the vender.





CAUTION
ELECTROSTATIC DISCHARGE

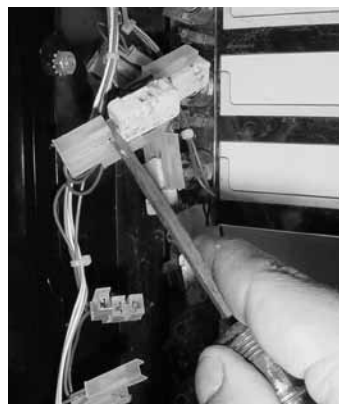
Electrostatic Discharge (ESD) can damage electronic components. To prevent damage by ESD, always ground yourself to the vender's door chassis before touching or working near electronic components.

Step D. Micro-switch and select harness removal.

1. Working from inside the door, grasp micro-switch between the thumb and forefinger. Twist micro-switch to remove from switch holders.
2. Remove the micro-switches from the select switch harness by using your hand to pull apart the harness from the micro-switch tabs. (If pulling them apart by hand is too difficult, a screwdriver may be used, as shown in Figure 11.) Save these micro-switches for later use.

PROCEED TO SECTION 2: SIGN INSTALLATION AND COMPLETION.

Figure 11. If the micro-switches and select switch harness cannot be separated by hand, pry the micro-switches off of the select switch harness with a flat screwdriver.



**ANY QUESTIONS? CONTACT ROYAL VENDORS' CUSTOMER SERVICE DEPARTMENT
IN NORTH AMERICA, CALL TOLL FREE 1 800 931 9214**



SERVICE BULLETIN 334

426 Industrial Boulevard • Kearneysville WV 25430-2776 • USA
Telephone: +1 304 728 7056 • technicalinquiry@royalvendors.com
Toll-free in North America: 1 800 931 9214 • Fax: +1 304 725 4016
Canada: +1 905 738 5777 • Mexico: +52 55 5203 6887
Europe: +49 2158 95 1000 • Australia: +61 2 9890 5433

Page: 5 of 11

Date: 14 Dec 10

Revision: 00

SUBJECT: 3D Vis Conversion Kit Installation

MODELS: GIII Landscape and Chameleon (Wide Port CDC only)

SECTION 2: SIGN INSTALLATION AND COMPLETION.

Step A. Installing the Button Assemblies.

NOTE: It is easier to insert and assemble the button assemblies in the sign on a flat surface before installing the sign in the vender. For that reason, the following steps should be completed in this order. IMPORTANT: BE CAREFUL NOT TO SCRATCH THE SIGN WHEN INSTALLING THE HARDWARE.

1. Remove the protective mask from the front and the back of the sign.
2. Remove the switch holder, nut, and washer from each selection button in the kit.
3. Insert the selection button shaft through the front of the sign. (Refer to Figure 13.)
4. Once the button shafts have been inserted, install the button bar bracket as shown in Figure 14.

Figure 13. Install the selection button shaft through the front of the sign.



Figure 14. Install the button bar bracket as shown.



5. Install the switch retainer bracket onto the button shaft. (Refer to Figure 15.)
6. Install the washer on the shaft of the button. Then, install the lock nut and thread it half-way. (Refer to Figure 16.)

Figure 15. Switch retainer on button shaft.



Figure 16. Install the washer on the shaft of the button, then install the lock nut.



**ANY QUESTIONS? CONTACT ROYAL VENDORS' CUSTOMER SERVICE DEPARTMENT
IN NORTH AMERICA, CALL TOLL FREE 1 800 931 9214**



SERVICE BULLETIN 334

426 Industrial Boulevard • Kearneysville WV 25430-2776 • USA
Telephone: +1 304 728 7056 • technicalinquiry@royalvendors.com
Toll-free in North America: 1 800 931 9214 • Fax: +1 304 725 4016
Canada: +1 905 738 5777 • Mexico: +52 55 5203 6887
Europe: +49 2158 95 1000 • Australia: +61 2 9890 5433

Page: 6 of 11

Date: 14 Dec 10

Revision: 00

SUBJECT: 3D Vis Conversion Kit Installation

MODELS: GIII Landscape and Chameleon (Wide Port CDC only)

7. Insert the micro-switch into the switch holder as shown in Figure 17. The micro-switch will snap into place with the tabs on the switch holder.
8. Insert the switch holder into the shaft. Press firmly until it snaps into place. (Refer to Figure 18.) *NOTE: It is critical that the switch holder **snaps** into place.*
9. Hand-tighten the lock nut. Then, tighten the lock nut an additional 1/4 turn with channel lock pliers. Once this step is complete, the button assembly should look like Figure 19, which shows the finished button assembly.
10. Repeat these steps as necessary for the rest of the button assemblies.

Figure 17. Insert the micro-switch into the switch holder.



Figure 18. Insert the switch holder into the shaft until it snaps into place.



Figure 19. Finished button assembly.



11. Install the wiring harness connectors on the micro-switches as shown in Figures 20 and 21.

Figure 20. Install the wiring harness connectors as shown.

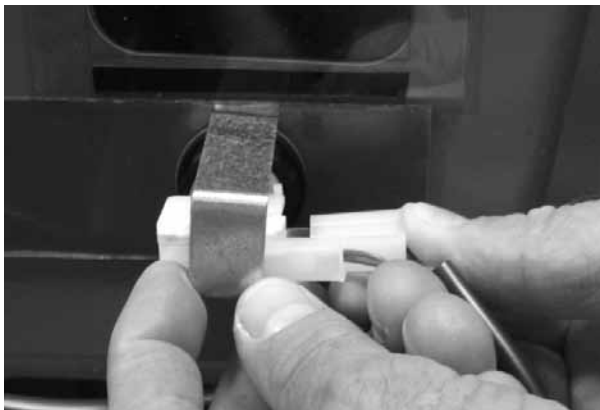
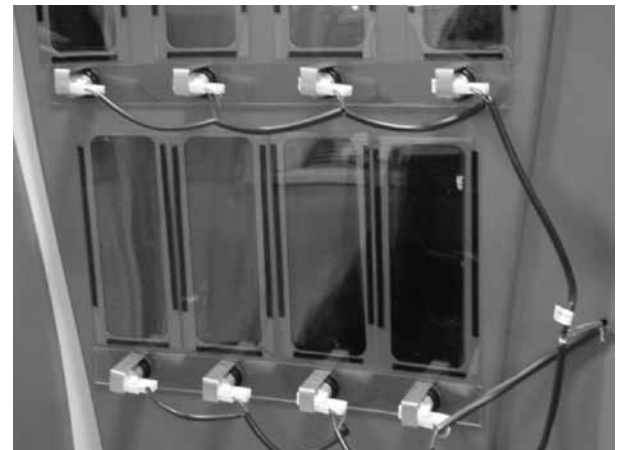


Figure 21. Install the wiring harness connectors as shown.



**ANY QUESTIONS? CONTACT ROYAL VENDORS' CUSTOMER SERVICE DEPARTMENT
IN NORTH AMERICA, CALL TOLL FREE 1 800 931 9214**



SERVICE BULLETIN 334

426 Industrial Boulevard • Kearneysville WV 25430-2776 • USA
Telephone: +1 304 728 7056 • technicalinquiry@royalvendors.com
Toll-free in North America: 1 800 931 9214 • Fax: +1 304 725 4016
Canada: +1 905 738 5777 • Mexico: +52 55 5203 6887
Europe: +49 2158 95 1000 • Australia: +61 2 9890 5433

Page: 7 of 11

Date: 14 Dec 10

Revision: 00

SUBJECT: 3D Vis Conversion Kit Installation

MODELS: GIII Landscape and Chameleon (Wide Port CDC only)

Step B. Installing the 3D Vis Sign.

1. Remove the screws that secure the control board housing in the vender. Allow the housing, with the control board still installed, to hang from the door.
2. Install the filler bracket so that it is even with the top left corner of the door, as viewed from the outside. (Refer to Figure 22.) Insert the two #8-32 x 3/8" screws from the kit, and secure them with two small nuts from the kit. Tighten the nuts with an 11/32" (9 mm) socket. (**Note:** No drilling is required for this step. The holes are already present in the door.)

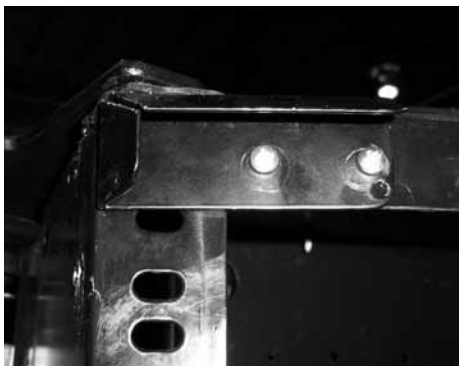


Figure 22. Install the filler bracket at the top left of the door. Insert the screws and secure them with two nuts.

3. Install the foam strip across the top of the door as shown in Figure 23. The right side of the foam should meet the corner of the door as shown in Figure 24. Trim the left side of the foam so that it meets the hinge evenly, as shown in Figure 25.



Figure 23. The foam strip should run straight across the width of the door as seen here.



Figure 24. The foam strip should meet the right corner of the door.

Figure 25. Trim the foam strip on an angle at the hinge on the left side.



**ANY QUESTIONS? CONTACT ROYAL VENDORS' CUSTOMER SERVICE DEPARTMENT
IN NORTH AMERICA, CALL TOLL FREE 1 800 931 9214**



SERVICE BULLETIN 334

426 Industrial Boulevard • Kearneysville WV 25430-2776 • USA
Telephone: +1 304 728 7056 • technicalinquiry@royalvendors.com
Toll-free in North America: 1 800 931 9214 • Fax: +1 304 725 4016
Canada: +1 905 738 5777 • Mexico: +52 55 5203 6887
Europe: +49 2158 95 1000 • Australia: +61 2 9890 5433

Page: 8 of 11

Date: 14 Dec 10

Revision: 00

SUBJECT: 3D Vis Conversion Kit Installation

MODELS: GIII Landscape and Chameleon (Wide Port CDC only)

4. Insert two carriage bolts in the top of the port and loosely attach the nuts to them, as shown in Figure 26. **Do not tighten the nuts at this point.** The bolts should hang as shown.
5. Place the sign on and tightly against the door frame, so that it hangs from the door. Make sure that the port carriage bolt slots in the sign slide around the bolts that were installed in the previous step. (Refer to Figures 27 and 28.)



Figure 26. The carriage bolts (one on each side of the port) should hang loosely.

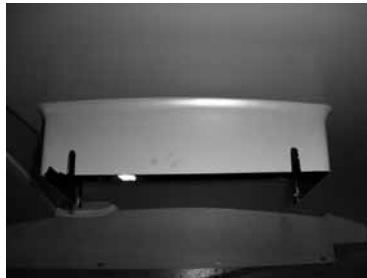


Figure 27. The sign slots shown here should slide around the port carriage bolts.

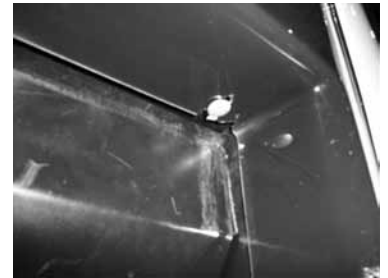


Figure 28. The carriage bolts fit in the slots as shown.

6. Pull the sign tight to the top of the door frame. Then, align the holes in the top trim with the holes in the top of the sign. Secure the trim and the sign to the door with four screws from the kit. The screws will go through the metal trim, sign, and foam strip. (Refer to Figures 29 and 30.)



Figure 29. Align the holes in the trim with the holes in the top of the sign.



Figure 30. Trim and sign secured to door.

**ANY QUESTIONS? CONTACT ROYAL VENDORS' CUSTOMER SERVICE DEPARTMENT
IN NORTH AMERICA, CALL TOLL FREE 1 800 931 9214**



SERVICE BULLETIN 334

426 Industrial Boulevard • Kearneysville WV 25430-2776 • USA
Telephone: +1 304 728 7056 • technicalinquiry@royalvendors.com
Toll-free in North America: 1 800 931 9214 • Fax: +1 304 725 4016
Canada: +1 905 738 5777 • Mexico: +52 55 5203 6887
Europe: +49 2158 95 1000 • Australia: +61 2 9890 5433

Page: 9 of 11

Date: 14 Dec 10

Revision: 00

SUBJECT: 3D Vis Conversion Kit Installation

MODELS: GIII Landscape and Chameleon (Wide Port CDC only)

7. Insert the bottle stop in the slots at each side of the sign port. Then, insert the carriage bolts that secure each side of the sign port to the port assembly. From the inside of the door, secure the carriage bolts with nuts, and tighten the nuts with a 7/16" (11 mm) wrench or socket.
8. Pushing the sign tightly against the door and using it as a template, use a 1/4" (6 mm) drill bit to create the two holes for the top-right sign trim threadstuds. (Refer to Figure 32.) Drill the holes as closely as possible to the center of the slots in the sign.
9. Pushing the sign tightly against the door and using it as a template, use a 1/4" (6 mm) drill bit to create the four holes for the lower-right sign trim threadstuds. Drill the holes as closely as possible to the center of the slots in the sign.
10. Pushing the sign tightly against the door and using it as a template, use a 1/4" (6 mm) drill bit to create the six holes for the left sign trim threadstuds. Drill the holes as closely as possible to the center of the slots in the sign.
11. Install the right-side and left-side trim. (Refer to Figure 32.) Secure the trim pieces to the door and sign with the 11/32" (9 mm) nuts.

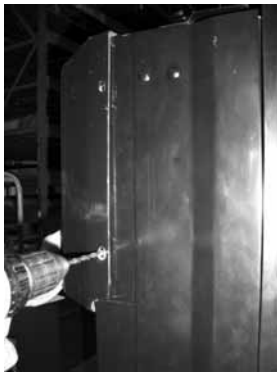


Figure 31. Use a 1/4" (6 mm) bit to drill holes for the trim as shown. Drill as closely as possible to the center of the slots in the sign.



Figure 32. Once the holes have been drilled for all trim, install it as shown. Secure the trim with the 11/32" (9 mm) nuts from the kit.

12. Using the sign as a template, use the 1/4" (6 mm) drill bit to create the two holes for the carriage bolts adjacent to the control panel. (Refer to Figure 33.)
13. Install two carriage bolts in the holes that were drilled in the previous step. From the inside of the door, secure the carriage bolts with two nuts from the kit. Tighten the nuts with a 7/16" (11 mm) wrench or socket.

Figure 33. Use a 1/4" (6 mm) bit to drill two holes adjacent to the control panel. One of these holes is shown here.



**ANY QUESTIONS? CONTACT ROYAL VENDORS' CUSTOMER SERVICE DEPARTMENT
IN NORTH AMERICA, CALL TOLL FREE 1 800 931 9214**



SERVICE BULLETIN 334

426 Industrial Boulevard • Kearneysville WV 25430-2776 • USA
Telephone: +1 304 728 7056 • technicalinquiry@royalvendors.com
Toll-free in North America: 1 800 931 9214 • Fax: +1 304 725 4016
Canada: +1 905 738 5777 • Mexico: +52 55 5203 6887
Europe: +49 2158 95 1000 • Australia: +61 2 9890 5433

Page: 10 of 11

Date: 14 Dec 10

Revision: 00

SUBJECT: 3D Vis Conversion Kit Installation

MODELS: GIII Landscape and Chameleon (Wide Port CDC only)

14. Lift the vender with a forklift or set it on a stand so that the bottom of the door can be accessed. **WARNING: Exercise extreme caution when lifting the vender. See DANGER notice below.**
15. Secure the bottom of the door sign with two screws from the kit. (Refer to Figure 34.)
16. Lower the vender to the ground.





WARNING

EXTREME INJURY HAZARD

Use extreme caution when lifting the vender. Failure to heed this warning could result in **grave injuries, dismemberment, or even death.**

Figure 34. Secure the bottom of the door with two screws.

Step C. Installation of Sign Braces and Harness Routing.

1. Reinstall the vender's control board.
2. Attach the sign braces to the button retainer bracket as shown in Figures 35 and 36. Line up the pre-punched hole on the brace with the front of the slot on the button retainer bracket.
3. Route the selection harness through the notch in the door above the coin chute assembly. Plug it into the appropriate header on the vender's control board. (Refer to Figure 9.) Use two wire ties to secure the harness with the other wire harnesses leading to the control board.

Figure 35. Install the sign braces as shown.

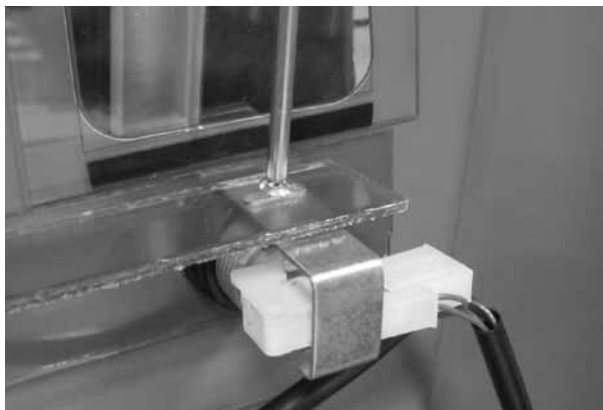
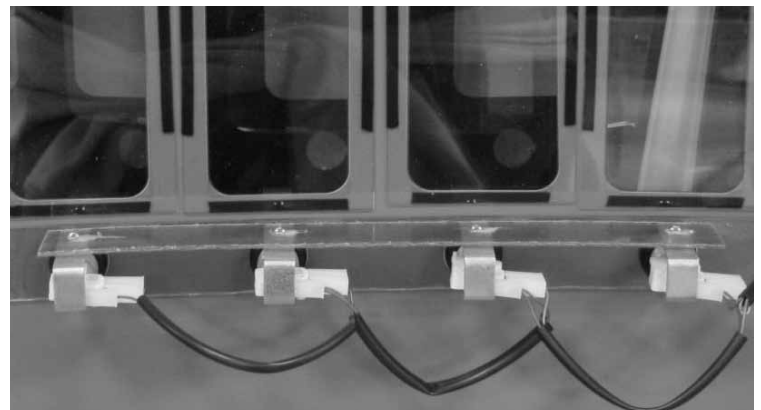


Figure 36. Sign brace attached to retainer brackets.



**ANY QUESTIONS? CONTACT ROYAL VENDORS' CUSTOMER SERVICE DEPARTMENT
IN NORTH AMERICA, CALL TOLL FREE 1 800 931 9214**



SERVICE BULLETIN 334

426 Industrial Boulevard • Kearneysville WV 25430-2776 • USA
Telephone: +1 304 728 7056 • technicalinquiry@royalvendors.com
Toll-free in North America: 1 800 931 9214 • Fax: +1 304 725 4016
Canada: +1 905 738 5777 • Mexico: +52 55 5203 6887
Europe: +49 2158 95 1000 • Australia: +61 2 9890 5433

Page: 11 of 11

Date: 14 Dec 10

Revision: 00

SUBJECT: 3D Vis Conversion Kit Installation

MODELS: GIII Landscape and Chameleon (Wide Port CDC only)

Step D. Installation Completion.

1. **IMPORTANT:** Seal the sign around the port can stop, the top of the door, and the transaction area with silicone to prevent water entry. *(Use the silicone specified on Page 1 of this bulletin.)*
2. Remove the masking tape that was placed on the bottom lamp sockets.
3. Reinstall the fluorescent light bulbs in the vender's door.
4. Reinstall the coinbox that was previously removed.
5. Plug the vender's power cord into a wall outlet. Reprogram the control board's space-to-sales for eight selections.
6. Check the vender for proper operation. *Installation is now complete!*



**ANY QUESTIONS? CONTACT ROYAL VENDORS' CUSTOMER SERVICE DEPARTMENT
IN NORTH AMERICA, CALL TOLL FREE 1 800 931 9214**