



# SERVICE BULLETIN # 00242

426 INDUSTRIAL BOULEVARD • KEARNEYSVILLE WV 25430-2776 • USA  
 Phone: (304) 728-7056 • Fax: (304) 725-6579 • Toll Free: (800) 931-9214

PAGE: 1 of 1
DATE: 10-20-03
REVISION: 00

**SUBJECT:** Incorrect Vending In 20+ Due To Bad Optic Sensor Boards

# of People  
Required



**MODELS:** All 20+ Models

**Part Number**      **Part Description**

836124              Optic Sensor Board

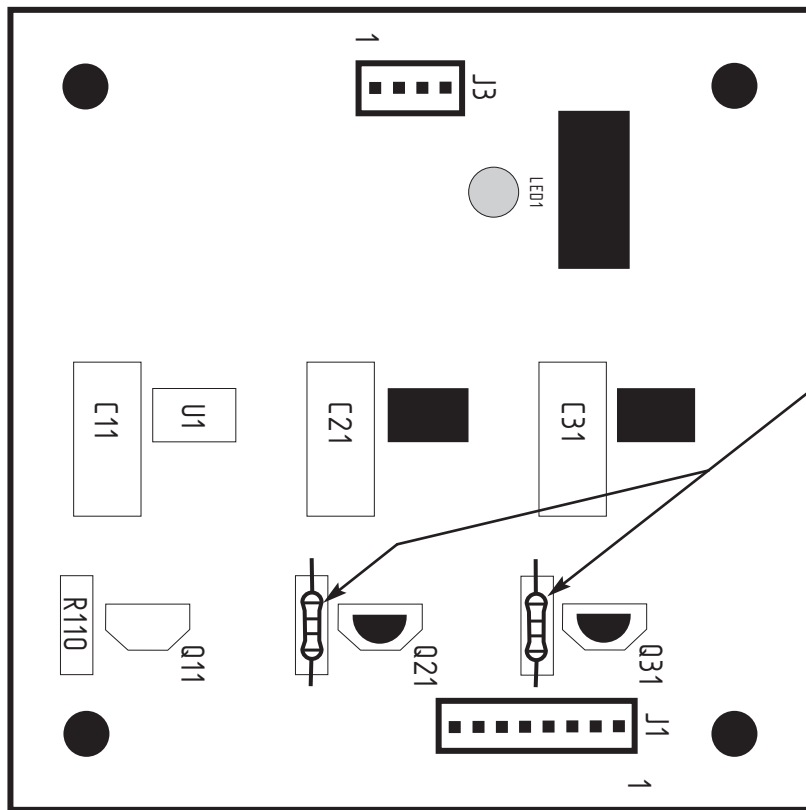
**TOOLS REQUIRED:** None

**ESTIMATED INSTALLATION TIME:** 3 minutes

**REASON FOR BULLETIN:** Some 20+ Venders built prior to 200341 may have the potential of multi-vends (multiple drinks for one purchase) or no-vends (stealing money), due to bad optic sensor boards.

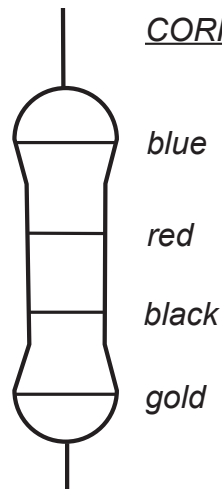
**HOW TO IDENTIFY BAD OPTIC SENSOR BOARDS:** At positions R210 and R310 (adjacent to positions Q21 and Q31, respectively), there are two resistors. These resistors each have four colored bands around them. The **correct** resistors will have a black band around them; the **incorrect** resistors will have a brown band. (See illustrations below.) If the optic sensor board has the incorrect resistors, replace the board.

Optic Sensor Board



Check the band colors on these resistors:

CORRECT RESISTOR:



**ANY QUESTIONS???** CONTACT ROYAL VENDORS' CUSTOMER SERVICE DEPARTMENT  
**CALL TOLL FREE (800) 931-9214**