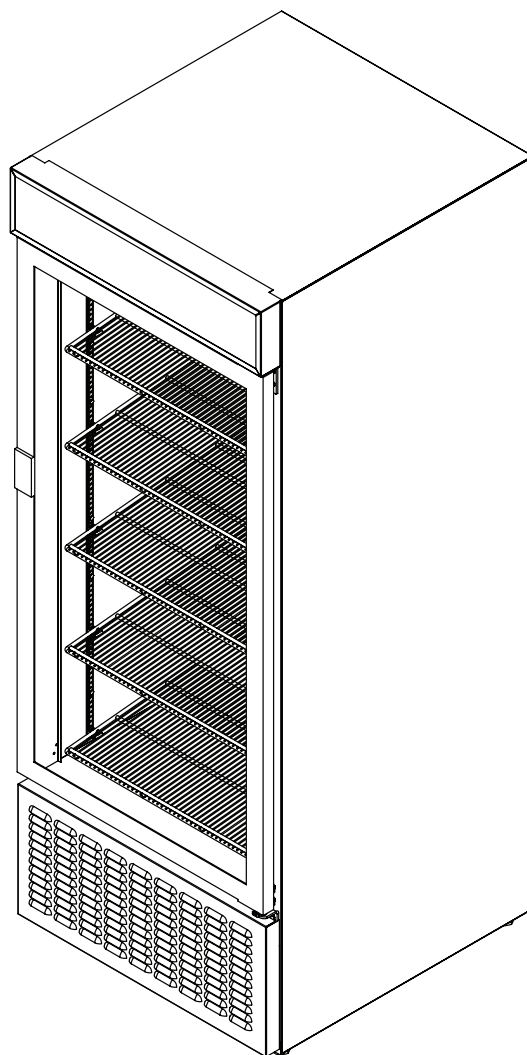


Royal Vision Cooler

Operation, Service, and Parts Manual



Manufactured by



Royal Vendors, Inc.

426 Industrial Boulevard
Kearneysville, West Virginia 25430-2776 USA

Telephone +1 304 728 7056 • Toll Free in North America 1 800 931 9214 • Fax +1 304 725 4016 • www.royalvendors.com



Royal Vendors, Inc. • 426 Industrial Boulevard • Kearneysville WV 25430-2776 • USA
Customer Service: +1 304 728 7056 or Toll Free in North America 1 800 931 9214 • Fax +1 304 725 4016

E-mail: technicalinquiry@royalvendors.com
parts@royalvendors.com

Website: www.royalvendors.com

TABLE OF CONTENTS

Safety Information.....	4
General Information and Setup.....	6
• Introduction.....	6
• Unpacking the Cooler and Installing It On Location.....	6
Start-Up.....	8
• Preliminary Checks.....	8
• Initial Start-Up.....	9
Refrigeration System Service.....	10
• Components.....	10
• Service and Troubleshooting.....	10
• Refrigeration System Service and Analysis.....	11
Wiring Diagram.....	12
Maintenance.....	13
RVC-027 Cabinet Parts.....	14
RVC-012 / RVC-010 Cabinet Parts.....	16
RVC-027 Refrigeration Unit.....	18
RVC-012 / RVC-010 Refrigeration Unit.....	20
RVC-027 Upper Lighting Panel Assembly.....	22
RVC-027 Door Assembly.....	23
RVC-012 / RVC-010 Door Assembly.....	24
Credit and Replacement Policy.....	Back Cover

TABLE OF CONTENTS

ROYAL VENDORS' COMMITMENT TO SAFETY

Royal Vendors is committed to safety with all of our product designs. We are committed to notifying the user of any possible danger involving the improper handling or maintenance of our products. The servicing of any electrical or mechanical device involves potential dangers, both to those servicing the equipment and to users of the equipment. These dangers can occur because of improper maintenance or usage. The purpose of this safety segment is to alert anyone servicing Royal equipment of potentially dangerous areas and to provide basic safety guidelines for proper upkeep.

This service manual contains various warnings that should be carefully read to minimize the risk of personal injury. This manual also contains service information to ensure that proper methods are followed to avoid damaging the machine or making it unsafe. It is also important to understand these warnings provide general guidance only. Royal could not possibly know, evaluate, or advise of all the conceivable ways in which service might be done. Consequently, Royal cannot predict all of the possible dangerous results. These outlined safety precautions are the basis for an effective safety program. Use these safety measures, along with the service bulletins, helpful hints, and product specification sheets, when installing or servicing Royal equipment.

We recommend that persons servicing our equipment maintain a similar commitment to safety. Only personnel properly trained should have access to the interior electrical and / or mechanical parts of the machine. This will minimize the potential dangers that are inherent in electrical and mechanical devices. Royal has no control over the vender once it leaves the premises. It is the owner or lessor's responsibility to maintain the vender in a safe condition. See installation insert located in the new machine for proper installation procedures, and refer to the service manual for recommended maintenance procedures. If you have any questions, please contact the Technical Service Department at 1 800 931 9214 (*outside North America, dial +1 304 728 7056*).

SAFETY REGULATIONS

- Read the safety segment before installation or service.
- Test for proper grounding before installing the machine to reduce the risk of electrical shock and fire.
- Disconnect the power cord from the wall outlet before servicing the machine.
- Only fully-trained service technicians should service the machine when it has power.
- Remove any product before moving a machine.
- Use appropriate equipment when moving a machine.
- Always wear eye protection, and protect your hands, face, and body when working near the refrigeration system.
- Use only authorized replacement parts.
- Be aware of inherent dangers in rocking or tipping a machine.

SECTION 1: ELECTRICAL HAZARDS GENERAL ADVICE

Careless or improper handling of electrical circuits can result in injury or death. Anyone installing, repairing, loading, opening, or otherwise servicing a machine should be aware of this precaution. Apply all of the normal precautions when handling electrical circuits, such as:

- Refrigeration servicing to be performed by qualified personnel only.
- Unplug the vender before servicing.
- Replace electrical cords if there is any evidence of fraying or other damage.
- Keep all protective covers and ground wires in place.
- Plug equipment into outlets that are properly grounded and polarized (where applicable), and protected with fuses or circuit breakers of the correct size.
- All electrical connections must be dry and free of moisture before applying power.

WARNING: ALWAYS TEST TO VERIFY PROPER GROUNDING PRIOR TO INSTALLATION IN ORDER TO REDUCE THE RISK OF ELECTRICAL SHOCK AND FIRE.

SECTION 2: ELECTRICAL HAZARDS

1. Servicing with power off.

For maximum safety, unplug the power cord from the wall outlet before opening the machine's door. This will aid in avoiding electrical hazards. Service personnel should remain aware of possible hazards from hot components although electrical power is off.

2. Servicing with power on.

Some service situations may require access with power on. Only fully-qualified service technicians should perform power-on servicing. Particular caution is required in servicing assemblies that combine electrical power and mechanical movement. Sudden movement (to escape mechanical action) can result in contact with live circuits and vice versa. It is therefore important to maintain maximum clearances from both moving parts and live circuits when servicing.

WARNINGS:

1. ONLY FULLY-TRAINED SERVICE PERSONNEL SHOULD ACCOMPLISH SERVICING WITH POWER ON. SUCH SERVICE BY UNQUALIFIED INDIVIDUALS CAN BE DANGEROUS.

2. LIGHTING CIRCUITS CAN BE HAZARDOUS. ALWAYS DISCONNECT THE MACHINE FROM THE WALL OUTLET BEFORE REPLACING A BULB OR SERVICING THE MACHINE IN THAT AREA.

NEVER USE A HOSE, PRESSURE WASHER, OR ANY CLEANING METHOD THAT COULD WET ELECTRICAL COMPONENTS. IF WATER CONTAMINATION OF ELECTRICAL COMPONENTS IS SUSPECTED, USE QUALIFIED ELECTRICAL TESTING EQUIPMENT AND TEST METHODS TO ASSURE THAT THE MACHINE IS NOT A HAZARD BEFORE APPLYING POWER FOR ANY REASON.

This equipment is intended for the storage and display of non-potentially hazardous bottled or canned products only.

GENERAL INFORMATION AND SETUP

INTRODUCTION

This manual contains installation, operation, and service instructions for the Royal Vision Cooler (RVC), by Royal Vendors, Inc. This manual also contains a parts catalog and electrical schematic for the RVC.

UNPACKING THE COOLER AND INSTALLING IT ON LOCATION UNWRAP THE VENDER

Unwrap the unit and remove the padding. Examine all packages for damage to packaging material. Damage to external packaging may have resulted in unit damage. Check packages for all accessories and components, including legs, casters, and shelves. File a claim immediately with the shipping company if the shipment is damaged or incomplete.

PLACE THE UNIT ON LOCATION

Units are designed for indoor placement only. Provide at least 4" (10 cm) of wall space behind the unit cabinet and any adjacent wall or fixture. Remove the shipping skids by inserting a claw hammer, crowbar, or similar device into the slot of each section to break it apart. Tilt the unit slightly to remove the separated pieces. Remove the cooler leveling legs, and place the protective sleeve over the threads of the legs. Replace the leveling legs with the protective sleeve in place, and be sure the cooler is level (*see following section*). The protective sleeves provide 3" (7.5 cm) clearance under the vender for cleaning.

LEVEL THE UNIT

To provide adequate condensate drainage and proper door alignment and operation of unit, the unit cabinet must be level. The leveling legs are factory-installed.

To remove the refrigeration deck:

Note: The refrigeration unit weighs in excess of 70 lbs (32 kg). Use caution when lifting the unit.

1. Remove power from the vender.
2. Remove the three screws that secure the left shroud.
3. Remove the three screws that secure the right shroud.
4. Remove the condensor pan and clip.
5. Remove the two screws that secure the unit's base plate.
6. Turn the lift rods to the upright position.
7. Slide the unit approximately half-way out.
8. Unplug the unit from the main junction block.
9. Disconnect the leads to the refrigeration control, and then pull them out of the wiring bushing.
10. Turn the lift rods all the way down.
11. Pull the unit completely out.
12. Installation of the new unit is the reverse of the removal process. Ensure that the unit slides within the cassette guides during installation.

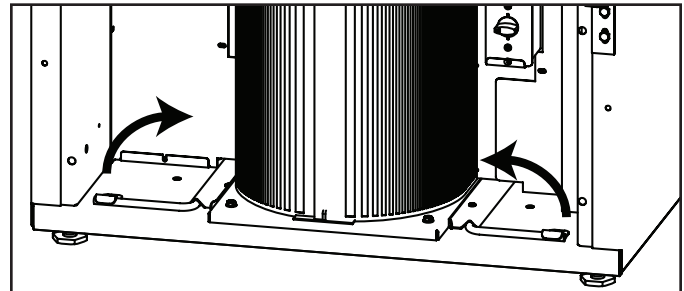
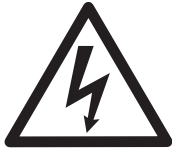


Figure 1. To remove the refrigeration deck, first pull the lifting rods forward and turn in the direction shown.

ROYAL VISION COOLER STANDARD PARTS

Parts	Factory Installed	Field Installed	Unit Size
			RVGVC 27
			Quantity
Refrigeration Deck	X		1
Shelves		X	5
Shelf Clips		X	20
Operation and Service Manual	-	-	1
Levelling Legs	X		4
Lamps	X		2
Leg Protective Sleeve		X	4

NOTE: Parts shown are for standard units. Quantity of shelves and clips may vary based on factory-supplied options.



DANGER

Before servicing the unit, disconnect electrical service. Failure to do so could result in electrical shock or electrocution and could cause personal injury or death!

To level the unit:

The door is spring-loaded and will not function properly without proper leveling of the cabinet. Using an adjustable wrench, adjust the leveling legs so that the unit sits approximately level to the floor and the door closes properly. For best door operation, adjust the leveling legs so that the cabinet has a 1/16" (2 mm) rake or slant from front to rear. Optional casters are available to replace the leveling legs.

INSTALL THE SHELVES

Product shelves and a bag containing shelf support clips are packed inside the unit. Refer to the table below to verify the quantity of shelves and shelf supporting clips.

To install the shelves:

1. Determine the proper location for the shelf clips. Refer to the numbers on the pilaster to ensure that all clips are properly located.
2. Insert the top tab of the shelf clip into the desired hole of the pilaster. The retaining tab should be facing upward, as shown in Figure 2.
3. Rotate the clip downward and insert the bottom tab into the appropriate hole on the pilaster. If necessary, squeeze the clip slightly during installation.
4. Install all remaining clips as described above.
5. Install the shelves onto the clips so that the product retention bars are facing upward. Be careful not to dislodge the clips during shelf installation.
6. Shelves must be placed so that the retaining tab on the shelf clip captures the shelf, as shown in Figure 3.
7. Before loading the shelf, ensure that the shelf is resting on each of the four clips and that the clips are installed as shown in Figures 2 and 3.

CONDENSATE DISPOSAL

The evaporator drain pan is located in the base of the refrigeration deck. Airflow in the deck compartment hastens condensate evaporation so that external drain plumbing is not required.



WARNING

Improper shelf clip installation may cause shelf and / or product to fall, which could result in personal injury or damage to the unit.



WARNING

Do not overload the shelves. The unit is designed to use all the shelves provided, installed in equally-spaced configuration. Failure to install shelves correctly could result in personal injury or damage to the unit. If fewer shelves or a different installation configuration is desired, contact the manufacturer to ensure that shelf overloading will not occur.

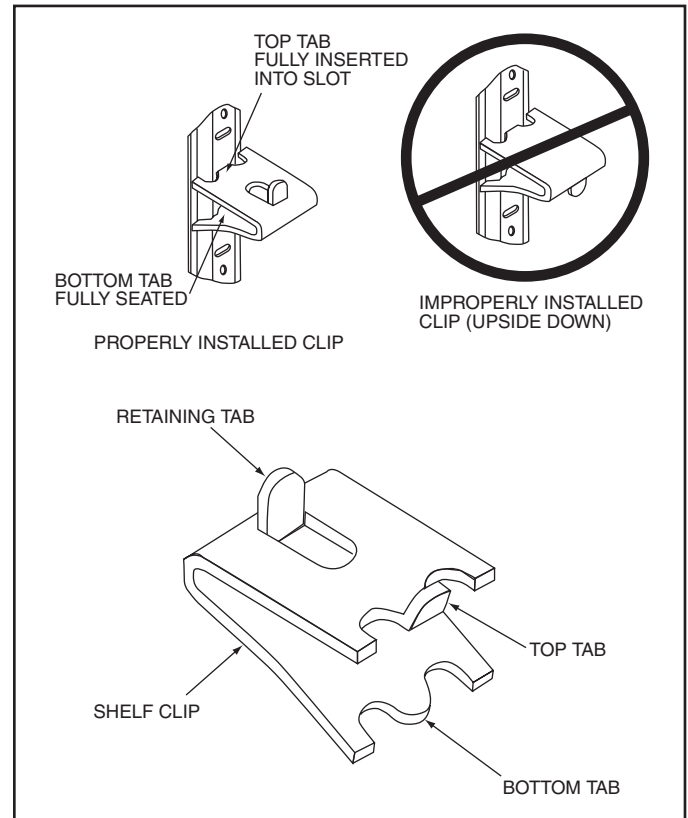


Figure 2. Shelf clip installation.

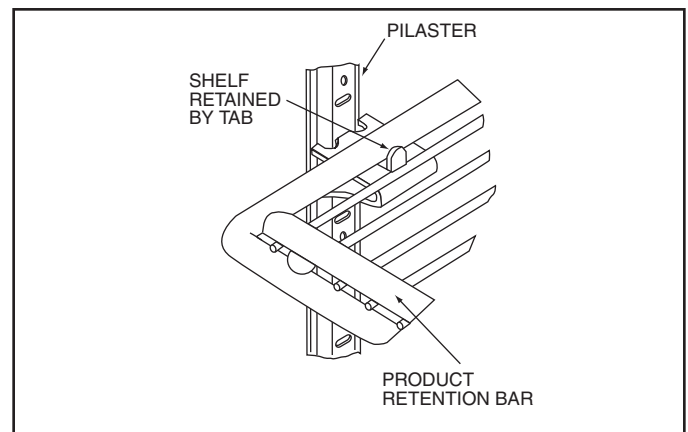


Figure 3. Proper installation of the shelf on the clip.

START-UP

PRELIMINARY CHECKS

Bi-pin fluorescent lamp installation / verification

Before applying power to the unit, verify that all lamps have been properly installed and are fully engaged in the lamp holders. The RVC 27 has two lamps, one in the signboard and one inside the cooler.

To achieve proper lamp engagement, rotate the lamp 90 degrees from its insertion position until it snaps or clicks into place.

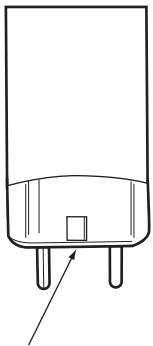
On units without safety shields, visually verify proper lamp installation by checking the identification mark on the end of the bulb. If the bulb has been properly installed, the mark will be centered between the halves of the lamp holder. (Refer to Figure 4.)

On units with safety shields, the identification mark cannot be seen. Verify manually that the lamp has been rotated and locked into place. (Refer to Figure 5.)

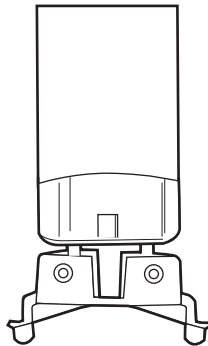


CAUTION

Improperly installed lamps may cause damage to the lighting circuit. Royal Vendors will not be responsible for equipment or component failures or other damages that arise from improper lamp installation.



BI-PIN LAMP END IDENTIFICATION MARK



Properly installed lamp without shield. Verify identification mark is positioned as shown.

Figure 4. Installation of lamp without safety shield.

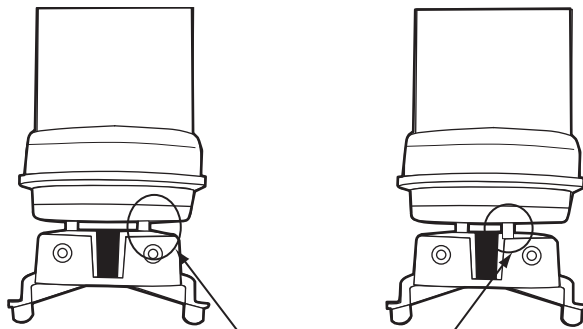


Figure 5. Installation of lamp with safety shield.

PINS MAY NOT BE VISIBLE IN ACTUAL INSTALLATION

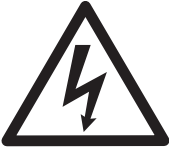
Properly installed lamp with shield. Requires manual verification that lamp has been rotated and locked into place.

Improperly installed lamp with shield. Note that pins have not achieved full 90° rotation.

Electrical Supply and Connections


Check to be sure that the electrical service to the unit meets all local and national electrical codes. Unit electrical data is shown on the unit data label, located on the inside of the cabinet in the upper left-hand corner. Review this label before initiating electrical service. The voltage range of the power supply to the unit should be 105 to 125 volts. Refer to the table below for unit data.

NOTE: Other motors or heavy appliances should not be used on the same circuit with the cooler.



DANGER

Before servicing the unit, disconnect electrical service. Failure to do so could result in electrical shock or electrocution and could cause personal injury or death!



CAUTION

If an extension cord is necessary, use only the three-wire grounding type. The use of ungrounded cords or an overloaded circuit voids the compressor warranty.

UNIT DATA	
UNIT	RVGVC 27
Voltage AC Nominal Range	115 105-125
Frequency	60 Hz
Total Amps	8
Refrigerant Type Charge Amount	R134a 6.5 oz. (0.18 kg)
Design Pressure High Side (psig) Low Side (psig)	300 156

INITIAL START-UP


Power Supply

Connect the unit to the power supply. Check to verify that the compressor, lamps, and fans are running.

IMPORTANT: Low line voltage is often the cause of service complaints. Check to see that the line voltage is within the specified range with the unit running.

Temperature Control

The temperature control adjustment knob is located in the front right of the refrigeration deck. The dial is factory-set at position “5”, which should maintain product at approximately 38° F (3.5° C). For colder temperature, turn the adjustment knob clockwise. Adjust the temperature in small increments until the desired cabinet temperature is reached.



CAUTION

Allow 24 hours between temperature control adjustments. Excessive tampering with the temperature control could lead to service difficulties.

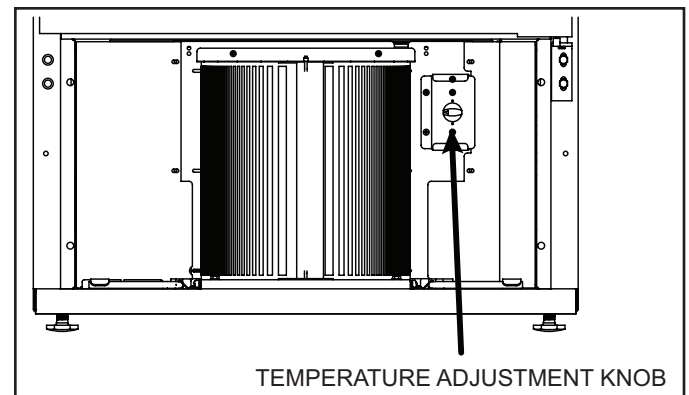


Figure 6. Temperature control adjustment knob location.

REFRIGERATION SYSTEM SERVICE

COMPONENTS

The Royal Vendors Cooler refrigeration system consists of a hermetically-sealed compressor and finned evaporator and condenser coils.

Condenser

The condenser has finned coils which assist in removing heat from the refrigerant. The condenser requires periodic cleaning for maximum efficiency.

Condenser Fan Motor

The condenser fan motor assembly is mounted between the condenser and the compressor. Air is drawn through the condenser, over the body of the compressor, and out the rear of the unit compartment.

The motor is wired to cycle with the compressor, but it will continue to operate should the compressor cut out on the overload. The motor is permanently lubricated; therefore, oiling is not required or recommended.

Drier

The drier is installed in the system just before the capillary tube. The drier traps minute particles of foreign material and absorbs any moisture in the system.

Liquid Control and Heat Exchanger

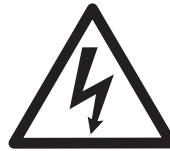
Liquid refrigerant control to the evaporator of the system is accomplished by the use of a capillary tube. This capillary tube is soldered to the suction line to form a heat exchanger, which subcools the liquid refrigerant to maintain high efficiency within the system.

SERVICE AND TROUBLESHOOTING

Refrigeration Deck Removal

Note: The refrigeration unit weighs in excess of 70 lbs (32 kg). Use caution when lifting the unit.

1. Remove power from the vender.
2. Remove the three screws that secure the left shroud.
3. Remove the three screws that secure the right shroud.
4. Remove the condensor pan and clip.
5. Remove the two screws that secure the unit's base plate.
6. Turn the lift rods to the upright position.
7. Slide the unit approximately half-way out.
8. Unplug the unit from the main junction block.
9. Disconnect the leads to the refrigeration control, and then pull them out of the wiring bushing.
10. Turn the lift rods all the way down.
11. Pull the unit completely out.
12. Installation of the new unit is the reverse of the removal process. Ensure that the unit slides within the cassette guides during installation.



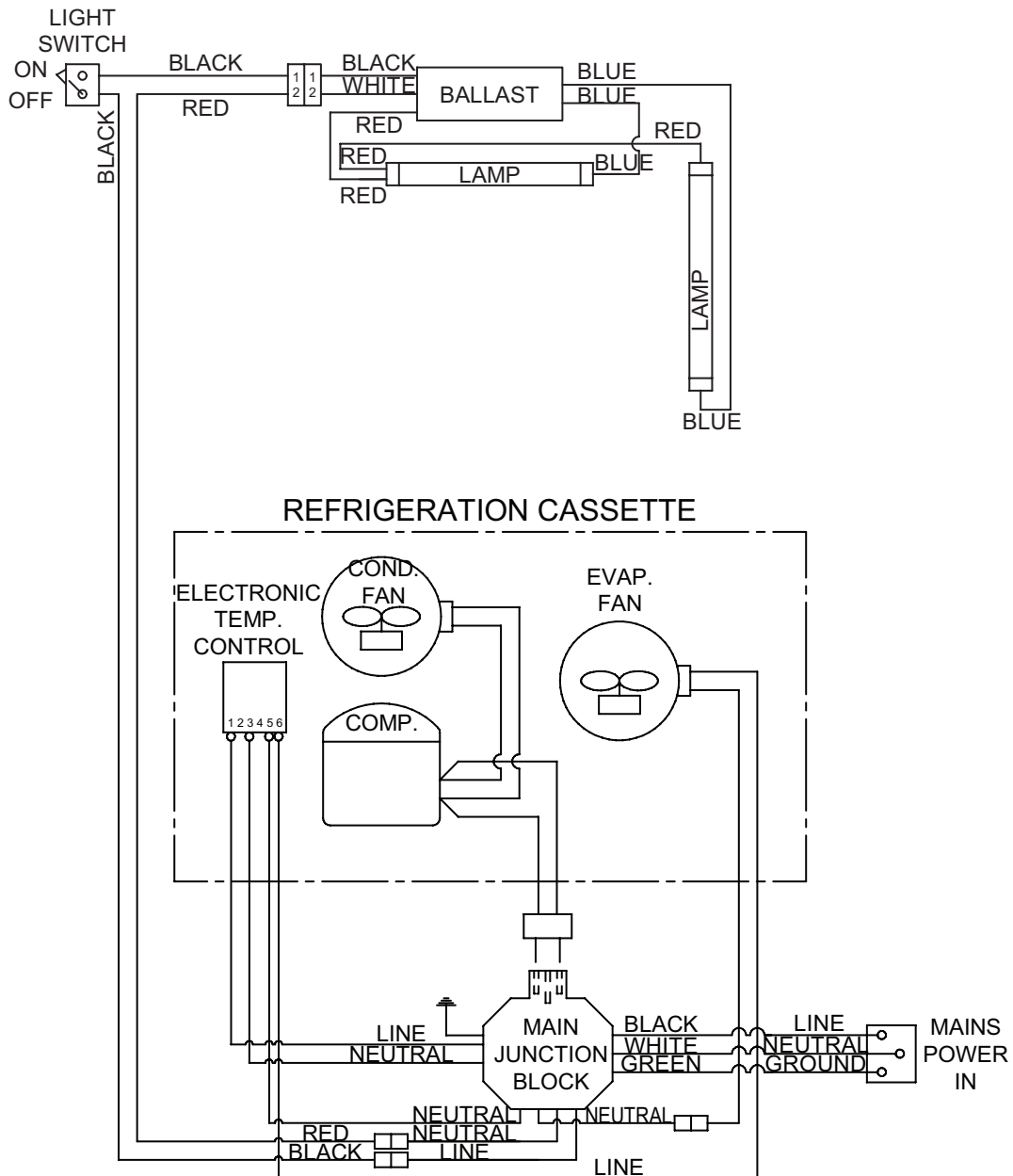
DANGER

Before servicing the unit, disconnect electrical service. Failure to do so could result in electrical shock or electrocution and could cause personal injury or death!

REFRIGERATION SYSTEM SERVICE AND ANALYSIS

PROBLEM	POSSIBLE CAUSE	CORRECTIVE ACTION
Compressor will not start; does not hum.	<ol style="list-style-type: none"> 1. Line cord not plugged in. 2. Temperature control stuck in open position. 3. Wiring improper or loose. 	<ol style="list-style-type: none"> 1. Plug in the cord. 2. Repair or replace temperature control. 3. Check wiring against schematic.
Compressor will not start; hums but trips on overload protector.	<ol style="list-style-type: none"> 1. Low voltage to unit. 2. Start capacitor defective. 3. Improperly wired. 	<ol style="list-style-type: none"> 1. Determine reason and correct. 2. Replace the capacitor. 3. Check wiring against schematic.
Compressor starts but does not switch off or start winding.	<ol style="list-style-type: none"> 1. Low voltage to unit. 2. Run capacitor defective. 3. Compressor motor winding is defective or shorted. 	<ol style="list-style-type: none"> 1. Determine reason and correct. 2. Replace the capacitor. 3. Determine cause, correct, and replace compressor.
Compressor starts and runs, but short-cycles on overload protector.	<ol style="list-style-type: none"> 1. Additional current passing through overload protector. 2. Low voltage to unit. 3. Overload protector defective. 4. Run capacitor defective. 5. Excessive discharge pressure. 6. Compressor too hot. 	<ol style="list-style-type: none"> 1. Check wiring schematic. Check for added fan motors, pumps, etc., connected to wrong side or protector. 2. Determine reason and correct. 3. Check current and replace protector. 4. Replace the capacitor. 5. Check ventilation, restrictions in cooling medium, restrictions in refrigeration system. 6. Check airflow across condenser.
Unit runs but short-cycles.	<ol style="list-style-type: none"> 1. Overload protector. 2. Cold control. 3. Bad refrigeration unit. 	<ol style="list-style-type: none"> 1. Check wiring schematic for correct wiring. 2. Change cold control setting. 3. Replace the refrigeration unit.
Unit operates too long or continuously.	<ol style="list-style-type: none"> 1. Dirty condenser. 2. Cold control contacts stuck or frozen. 3. Evaporator fan not working. 4. Bad refrigeration unit. 	<ol style="list-style-type: none"> 1. Clean condenser. 2. Replace cold control. 3. Check evaporator fan wiring. If correct, replace evaporator fan. 4. Replace refrigeration unit.
Cabinet temperature too high.	<ol style="list-style-type: none"> 1. Cold control setting too high. 2. Inadequate cabinet air circulation. 3. Dirty evaporator. 4. Dirty condenser. 5. Inadequate air circulation at refrigeration deck. 	<ol style="list-style-type: none"> 1. Reset cold control. 2. Check evaporator fan motor. 3. Clean evaporator. 4. Clean condenser. 5. Check condenser fan motor.
Cooler freezing beverages.	Cold control set incorrectly.	Reset cold control.
Unit is noisy.	<ol style="list-style-type: none"> 1. Loose parts or mountings. 2. Tubing rattling. 3. Bent fan blade causing vibration. 4. Fan motor bearings worn. 	<ol style="list-style-type: none"> 1. Find and tighten. 2. Reform to be free of contact. 3. Replace blade. 4. Replace motor.

WIRING DIAGRAM



MAINTENANCE

LAMP REPLACEMENT

Remove the lamps by rotating 90 degrees to align the lamp pins with the holder slots. Refer to “Bi-pin fluorescent lamp installation / verification” on page 8 for further information on lamp removal.

CONDENSATE REMOVAL

The evaporator drain pan is located in the base of the refrigeration deck. Airflow in the deck compartment hastens condensate evaporation so that external drain plumbing is not required. In general, this renders the condensate pan maintenance-free.

CONDENSER

The condenser should be inspected periodically for accumulation of debris, which should be removed. A vacuum cleaner or wire brush can be used to remove debris. Be careful to not bend the condenser fins.

CABINET EXTERIOR

Cabinets should be cleaned with a solution of mild soap and water or mild household cleaner. Do not use caustic soap or abrasive cleaners, since these might damage the cabinet finish. Do not use steel wool, or rusting might occur.

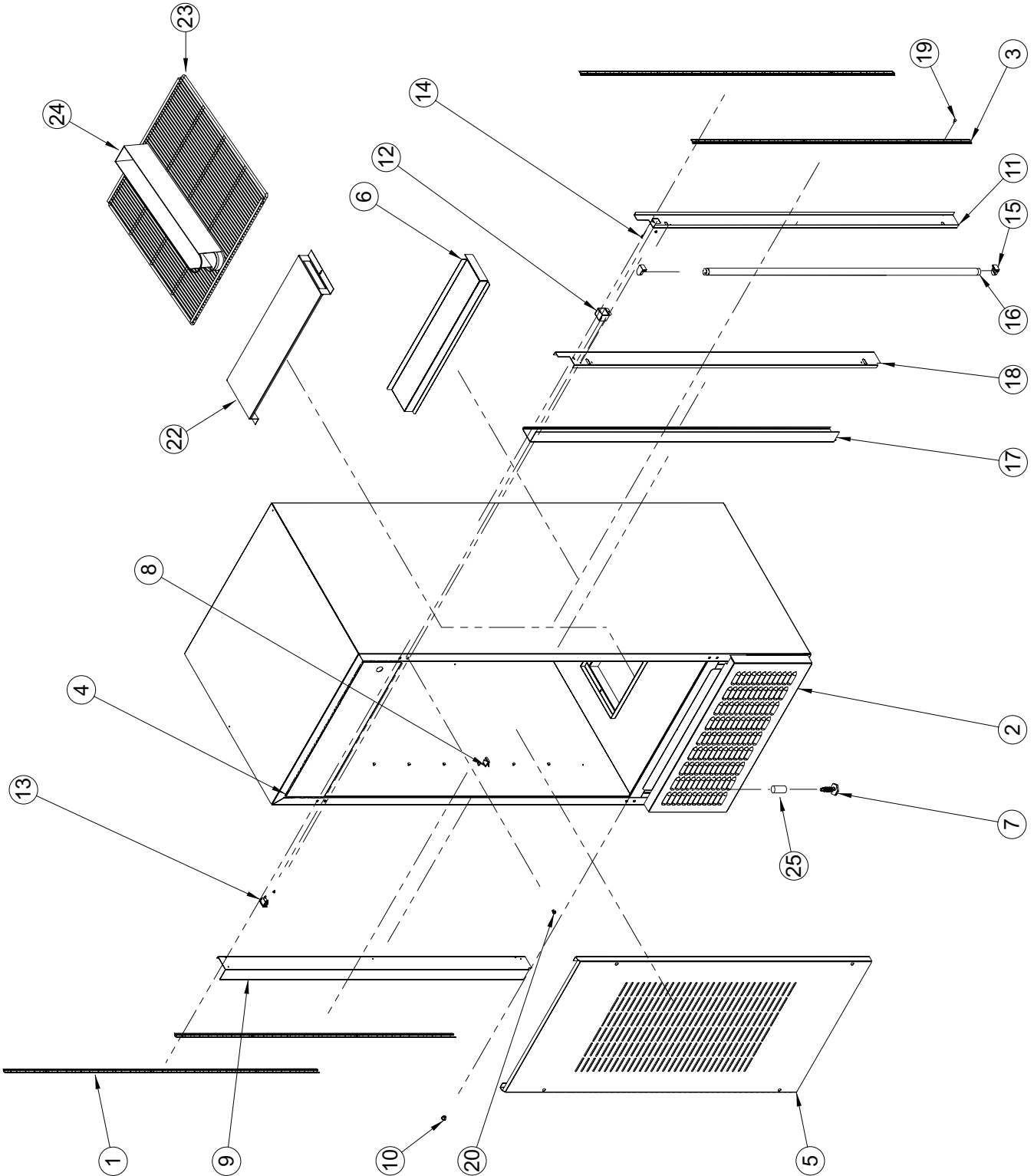
INTERIOR SURFACE

The inside of the cabinet is coated with powder-coat paint. To clean, use a mild soap and water solution or mild household cleaner.

UNDERNEATH COOLER

Underneath the cooler can be cleaned by hand or by using an appropriate cleaning tool up to 1 1/2” thick. Use a mild soap and water solution or mild household cleaner.

RVC-027 CABINET PARTS

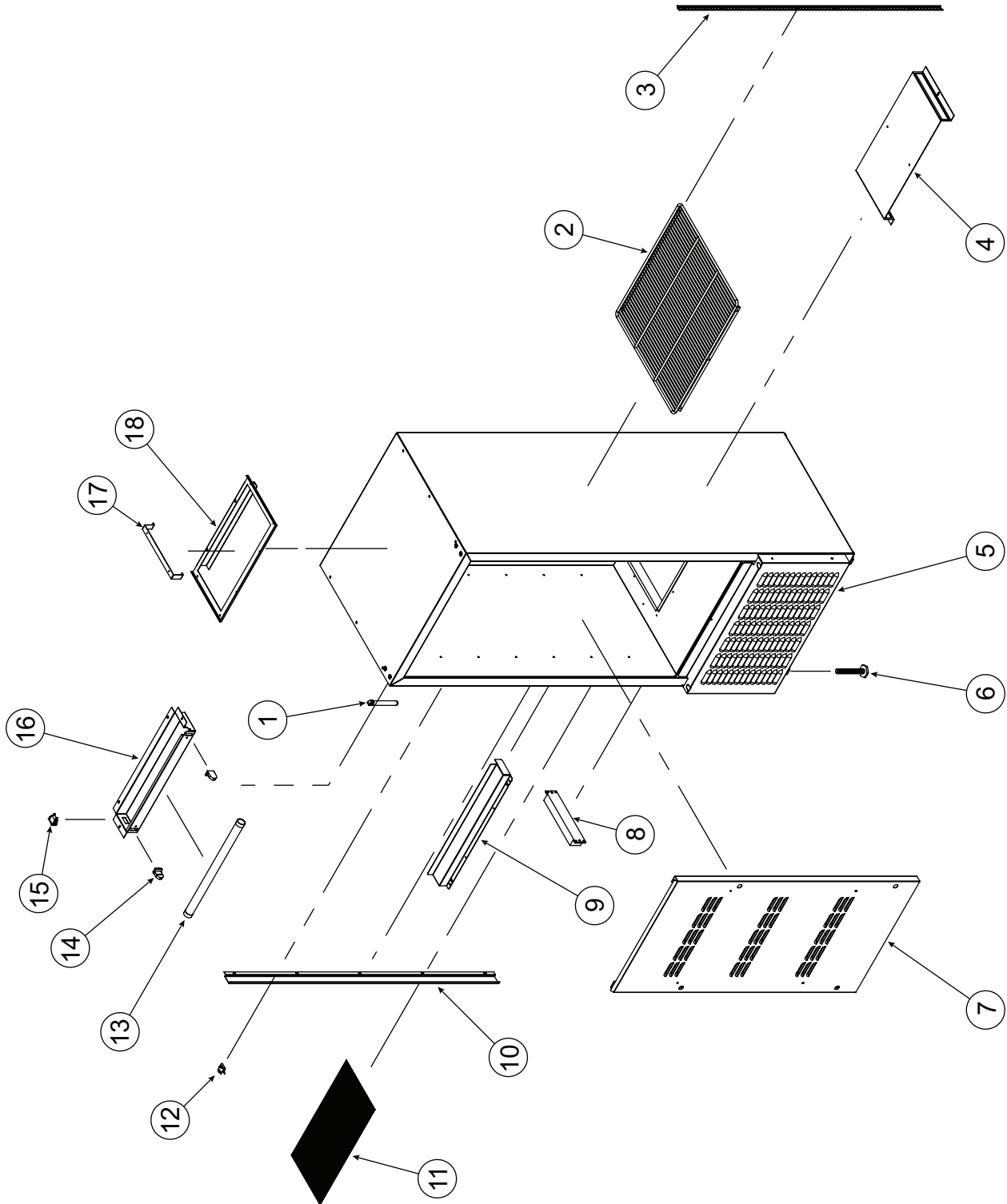


RVC-027 CABINET PARTS

Item	Description	Part Number
1	Key Hole Pilaster Rear, 54"	810338
2	Front Refrigeration Cover, 027	370009
3	Key Hole Pilaster Front, 48"	810337
4	Refrigeration Panel Assembly Foamed	370232
5	Air Duct Back, 027	370000
6	Air Duct Cover Rear	370001
7	Leveling Leg, Extended	803117
8	Pilaster Clip	810339
9	Lamp Bracket Panel Right.....	370004
10	Open / Closed Bushing, 1/2"	916120
11	Lamp Bracket Panel Cover Right	370005
12	Lamp Switch Mounting Bracket.....	370006
13	Switch, Black	835027
14	Sems Screw, #8-32 x 3/8"	901011
15	Lampholder.....	842565
16	Lamp, 48"	<i>See Note</i>
17	Lamp Bracket Panel Left	370007
18	Lamp Bracket Panel Cover Left.....	370008
19	Screw, Pilaster Locator.....	902048
20	Rivnut, 1/4"-20	908024
21	Thermometer (<i>not shown</i>)	812421
22	Fan Screen Cover	370010
23	Shelf, 30" x 30"	811072
24	Shelf Filler.....	<i>See Note</i>
25	Leveling Leg Protective Sleeve	915753
•	Safety Sleeve Tube Protector, 48" Lamp.....	816168
•	Main Wiring Harness	842707
•	Switch, On-Off	835027
•	Harness, Line, to Switch and Ballast.....	842695
•	Wiring Cover, with Hole	370237
•	Wiring Cover, without Hole	370240

NOTE: This part is not available as a purchase item from Royal Vendors.

RVC-012 / RVC-010 CABINET PARTS

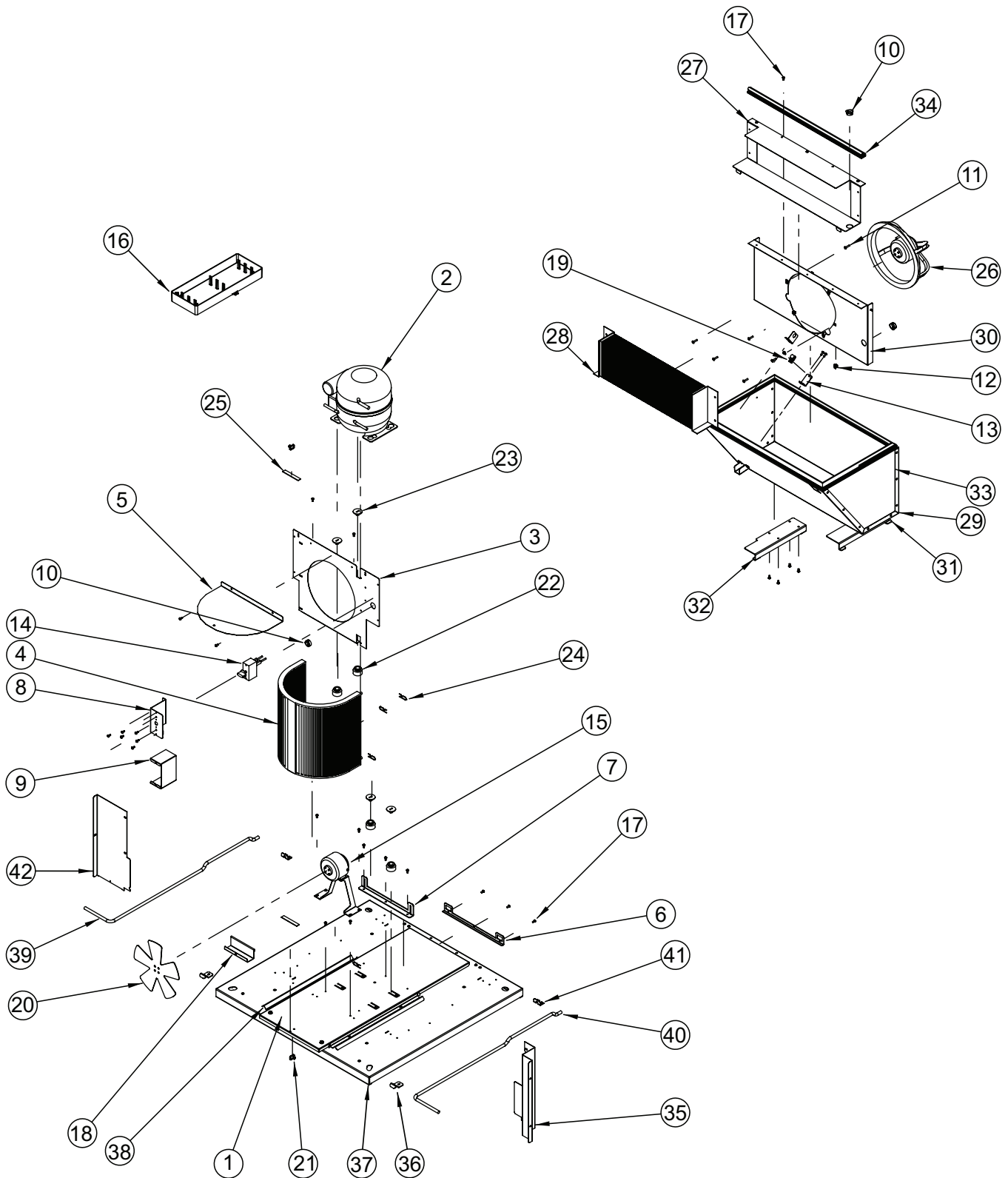


RVC-012 / RVC-010 CABINET PARTS

Item	Description	Part Number
1	Thermometer	812421
2	Shelf, 24" x 24"	811076
3	Key Hole Pilaster, RVC-012 (42")	810345
	- RVC-010 (34")	810348
4	Fan Screen Cover	371309
5	Front Refrigeration Cover	371002
6	Leveling Leg, Extended	803117
7	Air Duct Back, RVC-012	371000
	- RVC-010	372000
8	Ballast	838050
9	Air Duct Bottom	371001
10	Lamp Harness Channel, RVC-012 (62")	371004
	- RVC-010 (54")	372001
11	Fan Screen	371307
12	Pilaster Clip	810339
13	Lamp	<i>See Note</i>
14	Lampholder	842565
15	Switch, Black	835027
16	Lamp Panel	371003
17	Fan Screen Support	371313
18	Evaporator Air Block	371312
•	Leveling Leg Protective Sleeve	915753
•	Main Wiring Harness	842063

NOTE: This part is not available as a purchase item from Royal Vendors.

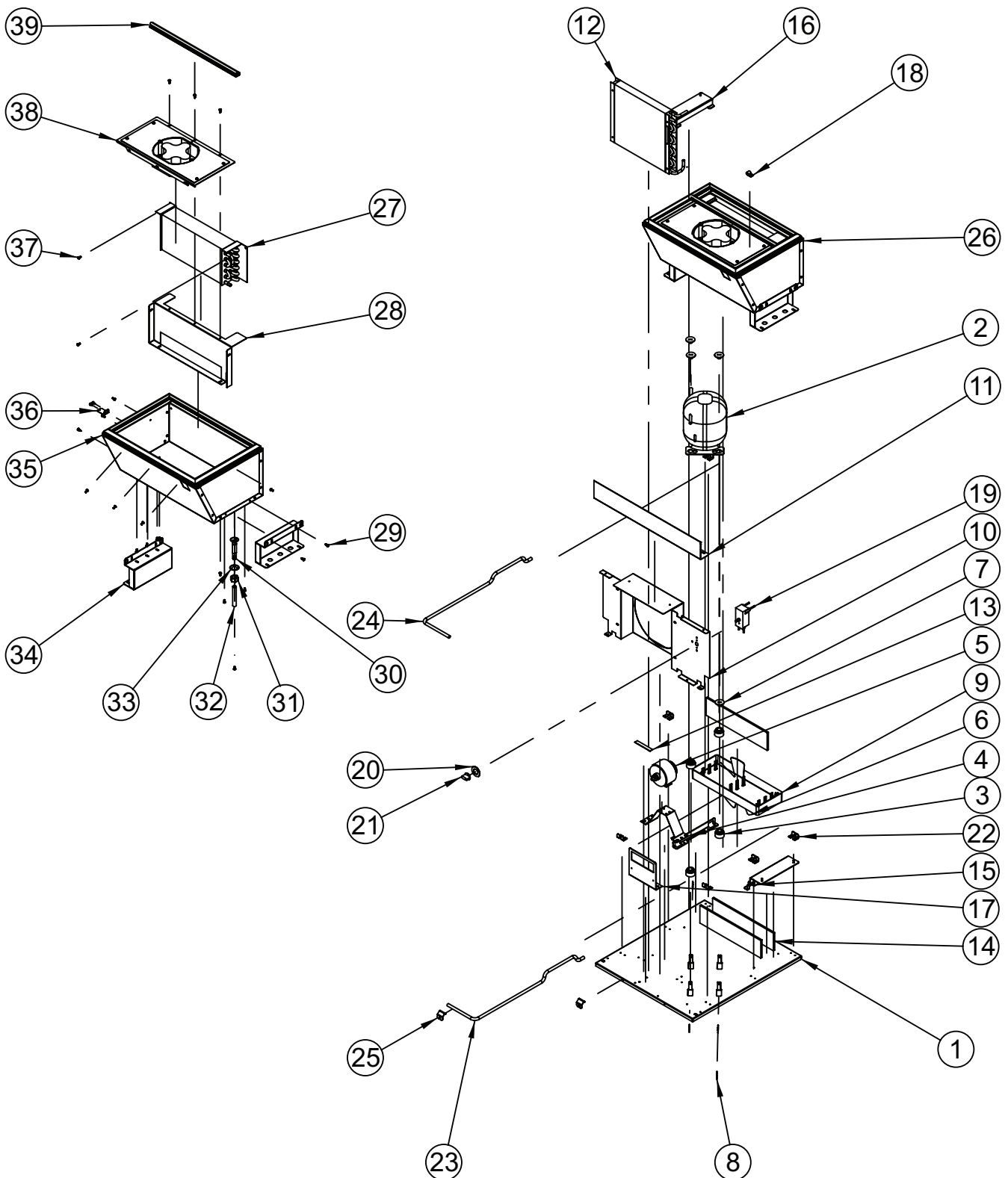
RVC-027 REFRIGERATION UNIT



RVC-027 REFRIGERATION UNIT

Item	Description	Part Number
•	Refrigeration Assembly <i>(includes items 1—36 below)</i>	370440
1	Refrigeration Base Plate	370401
2	Compressor, 1/3+ HP	819042
3	Condensor Shroud	370419
4	Condensor, Upright	820007
5	Condensor Top	370426
6	Guide Plate	370416
7	Guide Plate Angle	370417
8	Refrigeration Control Mounting Bracket	370432
9	Refrigeration Control Cover	370434
10	Bushing	916071
11	Screw, #8 x 3/4"	902022
12	Expansion Nut, #8	906054
13	Temperature Sensor Mounting Bracket	370433
14	Cold Control, Electronic	822077
15	Condensor Fan Motor	839010
16	Condensate Pan	815368
17	Screw, #8-32 x 3/8"	901011
18	Condensate Pan Clamp	370430
19	Cable Clamp	916014
20	Condensor Fan Blade	810014
21	Cable Tie, 5", Nylon, Black	916063
22	Grommet, Compressor	916015
23	Grommet Plug	815017
24	Compression Clip	914002
25	Sealer Gum, 3" x 1/2" x 1/16"	829003
26	Evaporator Fan	839036
27	Evaporator Mounting Bracket, Bottom	370413
28	Evaporator	820002
29	Evaporator Box Foamed Assembly	370402
30	Evaporator Fan Mounting Plate	370412
31	Guide Angle Right	370414
32	Guide Angle Left	370415
33	Gasket, Evaporator Box	815748
34	Gasket, Center Evaporator Box	815749
35	Condensor Baffle	370418
36	Rod Clamp	370422
37	Base Plate	370205
38	Cassette Guide	370222
39	Refrigeration Box Lift Rod Left	811073
40	Refrigeration Box Lift Rod Right	811077
41	Lift Rod Bracket	370420
42	Condensor Baffle Left	370428

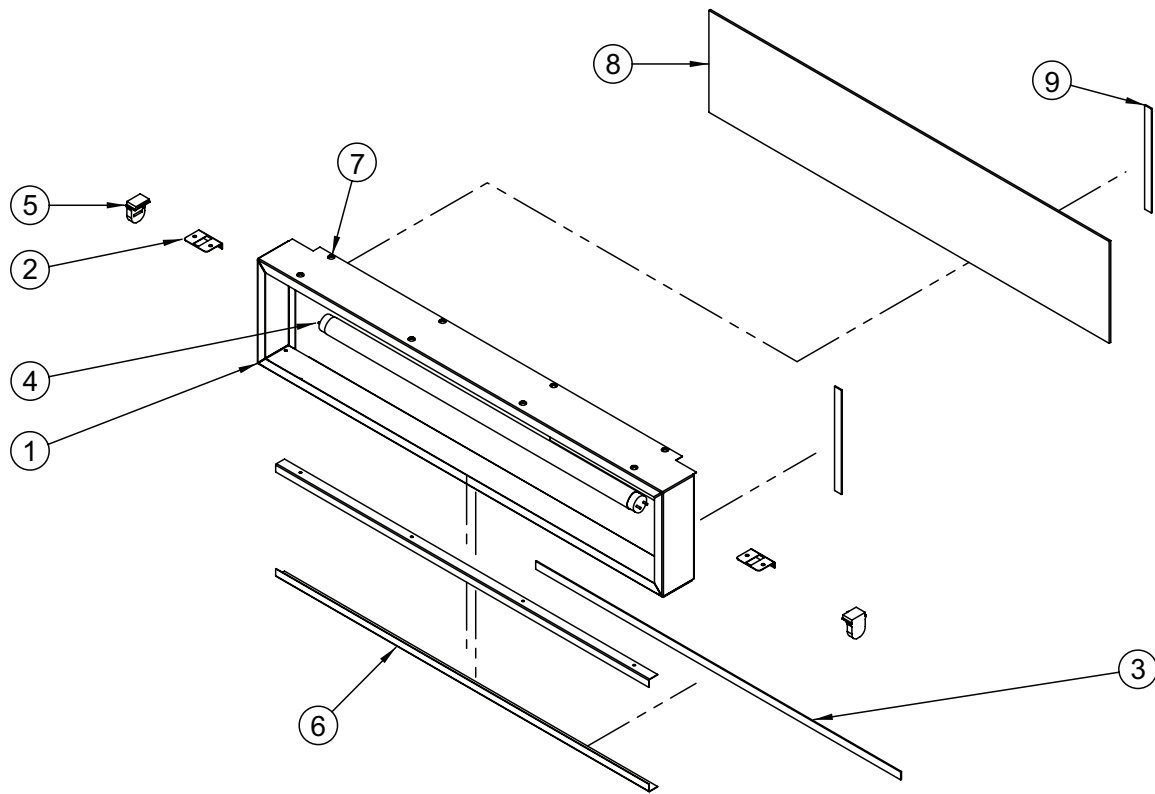
RVC-012 / RVC-010 REFRIGERATION UNIT



RVC-012 / RVC-010 REFRIGERATION UNIT

Item	Description	Part Number
•	Refrigeration Assembly.....	371400
1	Refrigeration Base Plate.....	371401
2	Compressor, 1/6 HP.....	819049
3	Grommet, Compressor.....	916015
4	Condensor Fan Bracket.....	371425
5	Evaporator Fan.....	839063
6	Condensor Fan Blade.....	810014
7	Grommet Plug.....	815017
8	Compression Clip.....	914002
9	Condensate Pan.....	815368
10	Condensor Shroud.....	371402
11	Condensor Baffle Top.....	371407
12	Condensor.....	820014
13	Sealer Gum, 3" x 1/2" x 1/16".....	829003
14	Cellulose Sponge.....	815037
15	Guide Plate Angle.....	371404
16	Guide Angle S/A.....	371409
17	Condensor Guard.....	371408
18	Cable Clamp.....	916014
19	Cold Control, Electronic.....	822077
20	Knob Plate.....	822082
21	Hand Knob, Black.....	822081
22	Lift Rod Bracket.....	370420
23	Refrigeration Box Lift Rod Right.....	811075
24	Refrigeration Box Lift Rod Left.....	811074
25	Rod Clamp.....	370422
26	Evaporator Box Assembly (includes items 27-39).....	371420
27	Evaporator.....	820013
28	Evaporator Mounting Bracket.....	371422
29	Self-drilling Screw, #8-18 x 1/2".....	902004
30	Drain Tube.....	815134
31	Hex Nut, 5/8"-11.....	905016
32	PVC Hose, 1/2" x 3.25".....	371424
33	Drain Tube Gasket.....	929015
34	Evaporator Box Lift Bracket.....	371406
35	Evaporator Box, Foamed.....	371415
36	Temperature Sensor Mounting Bracket.....	370433
37	Screw, #8-32 x 3/8".....	901011
38	Evaporator Fan Housing Assembly.....	371430
39	Evaporator Box Gasket.....	815752

RVC-027 UPPER LIGHTING PANEL ASSEMBLY

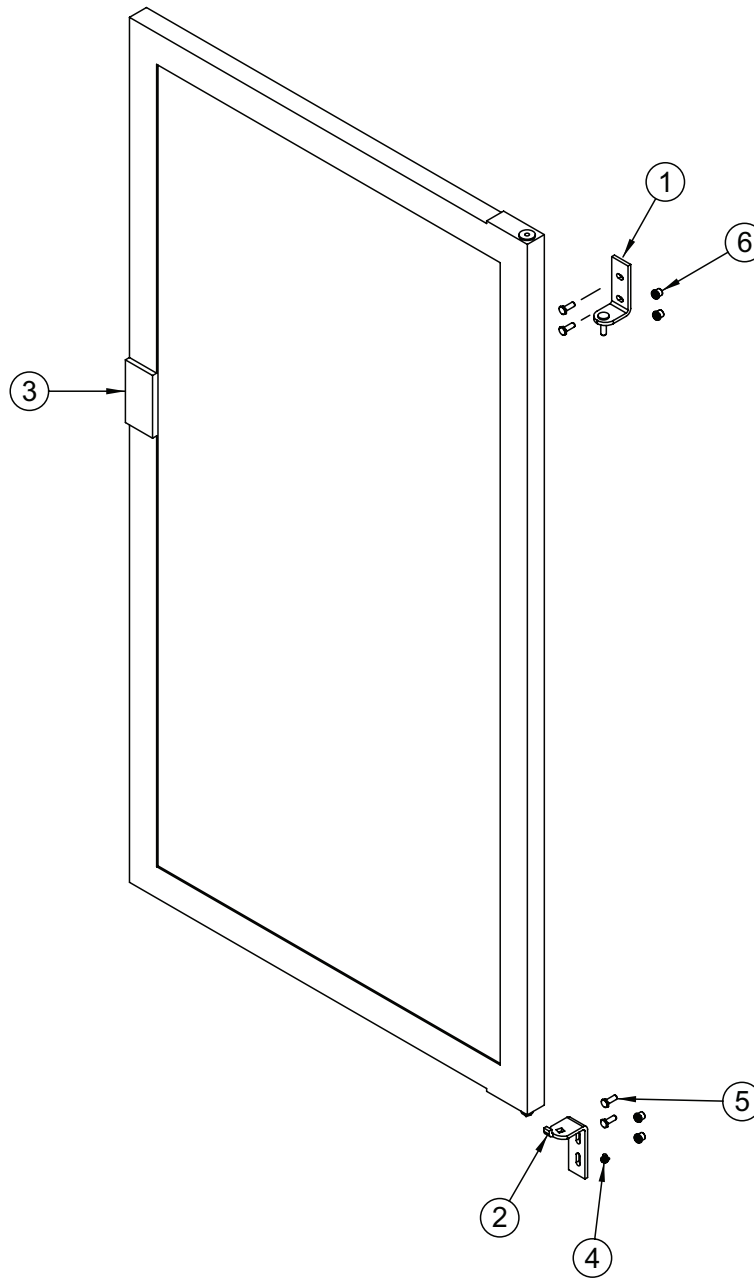


Item	Description	Part Number
1	Sign Frame	370218
2	Lamp Holder Bracket.....	356576
3	Sealer Gum, 3" x 1/2" x —".....	829—
4	Lamp, 24"	See Note 1
5	Lampholder.....	842565
6	Sign Retainer.....	370217
7	Screw, #8 x 3/8".....	902046
8	Sign Top.....	See Note 2
9	Sealer Gum, 3" x 1/2" x 1/16"	829003
•	Electronic Ballast.....	838036

NOTE 1: This part is not available as a purchase item from Royal Vendors.

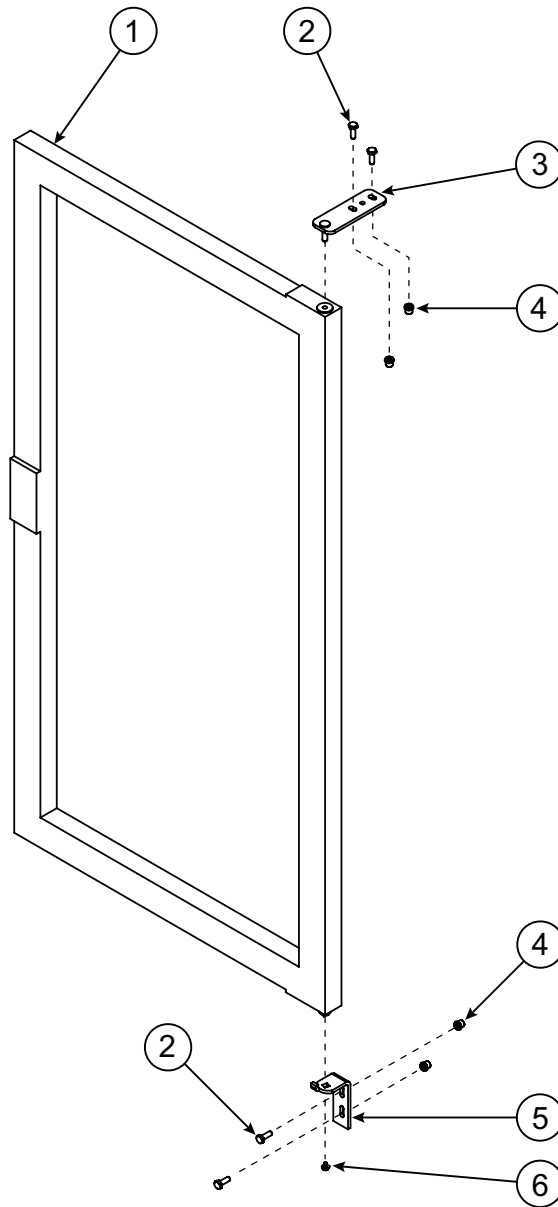
NOTE 2: Please contact Royal Vendors' Service Parts Department for sign part numbers.

RVC-027 DOOR ASSEMBLY



Item	Description	Part Number
1	Top Door Hinge.....	810340
2	Bottom Door Hinge	810341
3	Door, Cooler, with Magnetic Gasket	849922
4	Screw, Door Bottom.....	—
5	Machine Screw, 1/4"-20 x 3/4", Hex Head, Black	901127
6	Rivnut, 1/4"-20.....	908024

RVC-012 / RVC-010 DOOR ASSEMBLY



Item	Description	Part Number
1	Door, Cooler, with Magnetic Gasket, RVC-012	849945
	- RVC-010.....	849946
2	Machine Screw, 1/4"-20 x 3/4", Hex Head, Black	901127
3	Top Door Hinge.....	810346
4	Rivnut, 1/4"-20	908024
5	Bottom Door Hinge	810341
6	Screw, Door Bottom.....	—



CREDIT AND REPLACEMENT POLICY

Credits or replacements will be issued on warranty items if the proper procedures are followed:

1. ROYAL VENDORS will pay shipping charges on all parts covered under this warranty when transportation has been made the most economical way. (Example: Within the continental USA, regular ground UPS.) An A.R.S. (Authorized Return Service) sticker will be sent with all warranty parts. This method of shipping is preferred for returning parts to Royal.
2. Credits will only be issued to warranty parts that have been ordered in advance, not for parts ordered as stock. (NO EXCEPTIONS.)
3. When ordering warranty parts in advance, please have the full vender, refrigeration unit, and / or control board serial numbers.
4. A copy of the Packing Slip, the correct serial number and complete Return Material Tag (provided with part) are required for returning parts. Please fill out the Return Material Tag completely, keeping the white copy for your records and returning the yellow tag with the attached part. Make sure to fill in the company name, address, telephone number, serial number, and model number, along with a brief explanation of the problem.
5. If the item returned is not under warranty, it will be returned at your expense along with a US\$10.00 handling fee or it will be scrapped.
6. All warranty parts should be properly wrapped and packed securely to avoid further damage. Parts that are returned from the field and have been tapped into, tampered with, not packaged properly, or have had the serial plate or label removed, will void the warranty.
7. If parts are not returned within 15 working days, the invoice will be due in full.



Royal Vendors Publication
833097 Rev. 01
October 2011



Printed in the United States of America